

## Type VUC check valves

- Poppet type

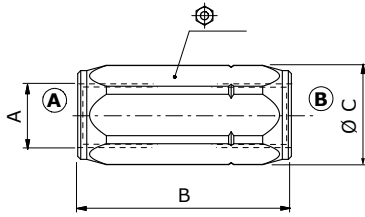
Technical specifications and diagrams are measured with mineral oil ISO VG32 at 50°C (122°F) temperature.

	VUC 14	VUC 38	VUC 12	VUC 34	VUC 100	VUC 114	VUC 112	
Nominal flow	30 l/min (7.9 US gpm)	50 l/min (13.2 US gpm)	90 l/min (23.8 US gpm)	130 l/min (34.3 US gpm)	180 l/min (47.6 US gpm)	250 l/min (66 US gpm)	380 l/min (100 US gpm)	
Max. pressure	400 bar (5800 psi)	400 bar (5800 psi)	350 bar (5100 psi)	300 bar (4350 psi)	270 bar (3900 psi)	250 bar (3600 psi)	200 bar (2900 psi)	
Oil leakage	0.25 cm <sup>3</sup> /min (0.015 in <sup>3</sup> /min) at 210 bar (3050 psi)							
Fluid	mineral based oil							
Viscosity	from 10 to 200 cSt							
Max. level of contamination	18/16/13 ISO4406							
Fluid temperature	with NBR seals: from -20°C (-4°F) to 80°C (176°F)							
Environmental temp. for working conditions	-40°C (-40°F) to 100°C (212°F)							
Weight	Steel	0.10 kg (0.22 lb)	0.18 kg (0.40 lb)	0.31 kg (0.68 lb)	0.56 kg (1.23 lb)	0.91 kg (2.01 lb)	1.48 kg (3.26 lb)	2.37 kg (5.22 lb)

NOTE - For different conditions, please contact Walvoil Sales Dpt.



### Dimensions



Dimensions are in mm-in

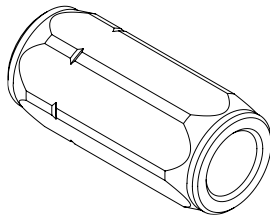
Valve type	A	B	Ø C	Ø
VUC 14	G 1/4	58 - 2.28	21 - 0.83	19
VUC 38	G 3/8	62 - 2.44	27 - 1.05	24
VUC 12	G 1/2	71 - 2.79	33 - 1.30	30
VUC 34	G 3/4	83 - 3.27	40 - 1.57	36
VUC 100	1	106 - 4.17	59 - 2.32	45
VUC 114	G 1 1/4	127 - 5	61 - 2.40	55
VUC 112	G 1 1/2	138 - 5.43	72 - 2.83	65

### Ordering codes and description composition

Port size      Opening pressure (bar)

**VUC14/Pa0,5 FO**

- without hole  
**FO** with metering hole



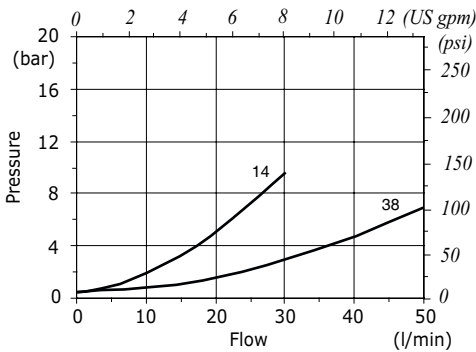
### VUC complete valves

TYPE	CODE	DESCRIPTION
VUC14/Pa0,5	1312510100	Steel body, opening pressure 0.5 bar (7.25 psi), G1/4 thread
VUC38/Pa0,5	1312520100	Steel body, opening pressure 0.5 bar (7.25 psi), G3/8 thread
VUC12/Pa0,5	1312530100	Steel body, opening pressure 0.5 bar (7.25 psi), G1/2 thread
VUC34/Pa0,5	1312540100	Steel body, opening pressure 0.5 bar (7.25 psi), G3/4 thread
VUC100/Pa0,5	1312550100	Steel body, opening pressure 0.5 bar (7.25 psi), G1 thread
VUC114/Pa0,5	1312560100	Steel body, opening pressure 0.5 bar (7.25 psi), G1 1/4 thread
VUC112/Pa0,5	1312570100	Steel body, opening pressure 0.5 bar (7.25 psi), G1 1/2 thread

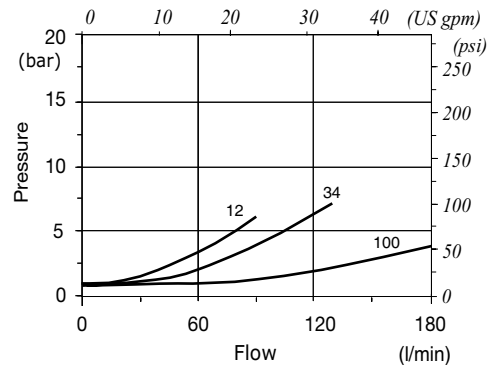
For different configurations and SAE thread please contact our Sales Dpt.

### Rating diagrams

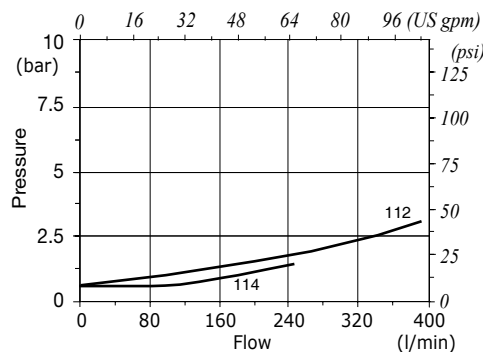
**VUC14-VUC38 pressure drop vs. flow**  
 opening pressure 0.5 bar (7.25 psi)



**VUC12-VUC34-VUC100 pressure drop vs. flow**  
 opening pressure 0.5 bar (7.25 psi)



**VUC114-VUC112 pressure drop vs. flow**  
 opening pressure 0.5 bar (7.25 psi)





## Type VUC/M check valves

- Poppet type

Technical specifications and diagrams are measured with mineral oil ISO VG32 at 50°C (122°F) temperature.

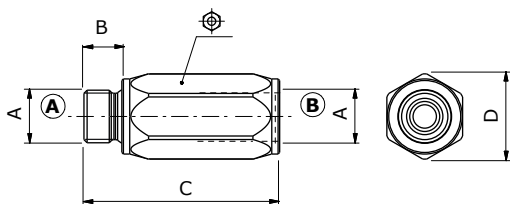
	<b>VUC/M 14</b>	<b>VUC/M 38</b>	<b>VUC/M 12</b>	<b>VUC/M 34</b>	<b>VUC/M 100</b>	<b>VUC/M 114</b>	
Nominal flow	30 l/min (7.9 US gpm)	50 l/min (13.2 US gpm)	90 l/min (23.8 US gpm)	130 l/min (34.3 US gpm)	180 l/min (47.6 US gpm)	250 l/min (66 US gpm)	
Max. pressure	400 bar (5800 psi)	400 bar (5800 psi)	350 bar (5100 psi)	300 bar (4350 psi)	270 bar (3900 psi)	250 bar (3600 psi)	
Oil leakage	0.25 cm <sup>3</sup> /min (0.015 in <sup>3</sup> /min) at 210 bar (3050 psi)						
Fluid	mineral based oil						
Viscosity	from 10 to 200 cSt						
Max. level of contamination	18/16/13 ISO4406						
Fluid temperature	with NBR seals: from -20°C (-4°F) to 80°C (176°F)						
Environmental temp. for working conditions	-40°C (-40°F) to 100°C (212°F)						
Weight	Steel	0.10 kg (0.22 lb)	0.18 kg (0.40 lb)	0.31 kg (0.68 lb)	0.56 kg (1.23 lb)	0.91 kg (2.01 lb)	1.48 kg (3.26 lb)

NOTE - For different conditions, please contact Walvoil Sales Dpt.



### Dimensions

Dimensions are in mm-in

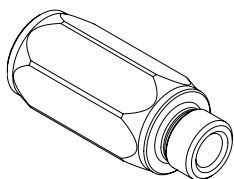


Valve type	A	B	C	D	⌀
VUC/M 14	G 1/4	12 - 0.47	58 - 2.28	21 - 0.83	19
VUC/M 38	G 3/8	12 - 0.47	62 - 2.44	27 - 1.05	24
VUC/M 12	G 1/2	14 - 0.55	71 - 2.79	33 - 1.30	30
VUC/M 34	G 3/4	16 - 0.63	76 - 2.99	40 - 1.57	36
VUC/M 100	1	18 - 0.71	106 - 4.17	49 - 1.93	45
VUC/M 114	G 1 1/4	20 - 0.78	122 - 4.80	63 - 2.48	55

### Ordering codes and description composition

Port size — Opening pressure (bar)

VUC/M 14/Pa0,5



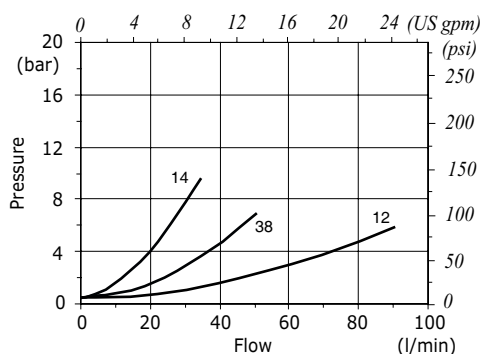
#### VUC/M complete valves

TYPE	CODE	DESCRIPTION
VUC/M14/Pa0,5	1312610100	Steel body, opening pressure 0.5 bar (7.25 psi), G1/4 thread
VUC/M38/Pa0,5	1312620100	Steel body, opening pressure 0.5 bar (7.25 psi), G3/8 thread
VUC/M12/Pa0,5	1312630100	Steel body, opening pressure 0.5 bar (7.25 psi), G1/2 thread
VUC/M34/Pa0,5	1312640100	Steel body, opening pressure 0.5 bar (7.25 psi), G3/4 thread
VUC/M100/Pa0,5	1312650100	Steel body, opening pressure 0.5 bar (7.25 psi), G1 thread
VUC/M114/Pa0,5	1312660100	Steel body, opening pressure 0.5 bar (7.25 psi), G1 1/4 thread

For different configurations and SAE thread please contact our Sales Dpt.

### Rating diagrams

VUC/M14-38-12 pressure drop vs. flow  
opening pressure 0.5 bar (7.25 psi)



VUC/M34-100-114 pressure drop vs. flow  
opening pressure 0.5 bar (7.25 psi)

