



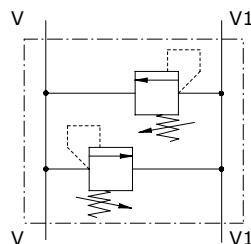
## Type VBDC..35 - VBDC..80 pressure relief valves

- Dual cross relief valve

Technical specifications and diagrams are measured with mineral oil of 46 cSt viscosity at 40°C (104°F) temperature.

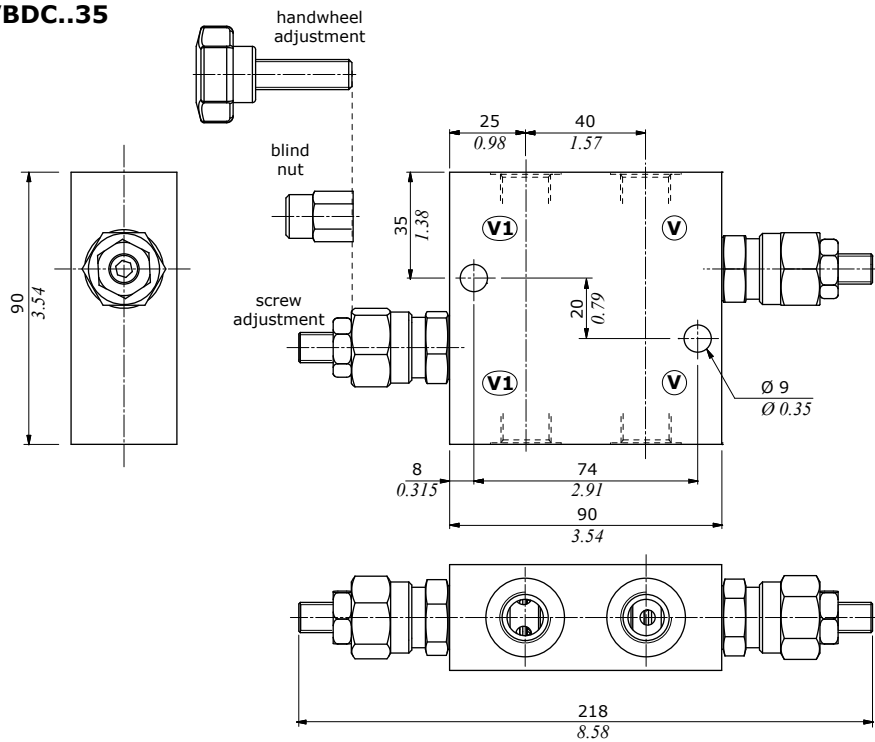
	<b>VBDC..3502</b>	<b>VBDC..3503</b>	<b>VBDC..8003</b>	<b>VBDC..8004</b>	
Nominal flow	35 l/min (9.2 US gpm)	35 l/min (9.2 US gpm)	80 l/min (21 US gpm)	80 l/min (21 US gpm)	
Max. pressure	Aluminium body = 210 bar (3050 psi) Steel body = 350 bar (5100 psi)				
Fluid	mineral based oil				
Viscosity	from 10 to 200 cSt				
Max. level of contamination	18/16/13 ISO4406				
Fluid temperature	with NBR seals from -20°C (-4°F) to 80°C (176°F)				
Environmental temp. for working conditions	from -40°C (-40°F) to 100°C (212°F)				
Weight	<i>alum.</i>	0.80 kg (1.76 lb)	0.80 kg (1.76 lb)	1.65 kg (3.64 lb)	1.60 kg (3.53 lb)
	<i>steel</i>	2.10 kg (4.63 lb)	2 kg (4.41 lb)	3.40 kg (7.49 lb)	3.30 kg (7.27 lb)

NOTE - For different conditions, please contact Walvoil Sales Dpt.



## Dimensions

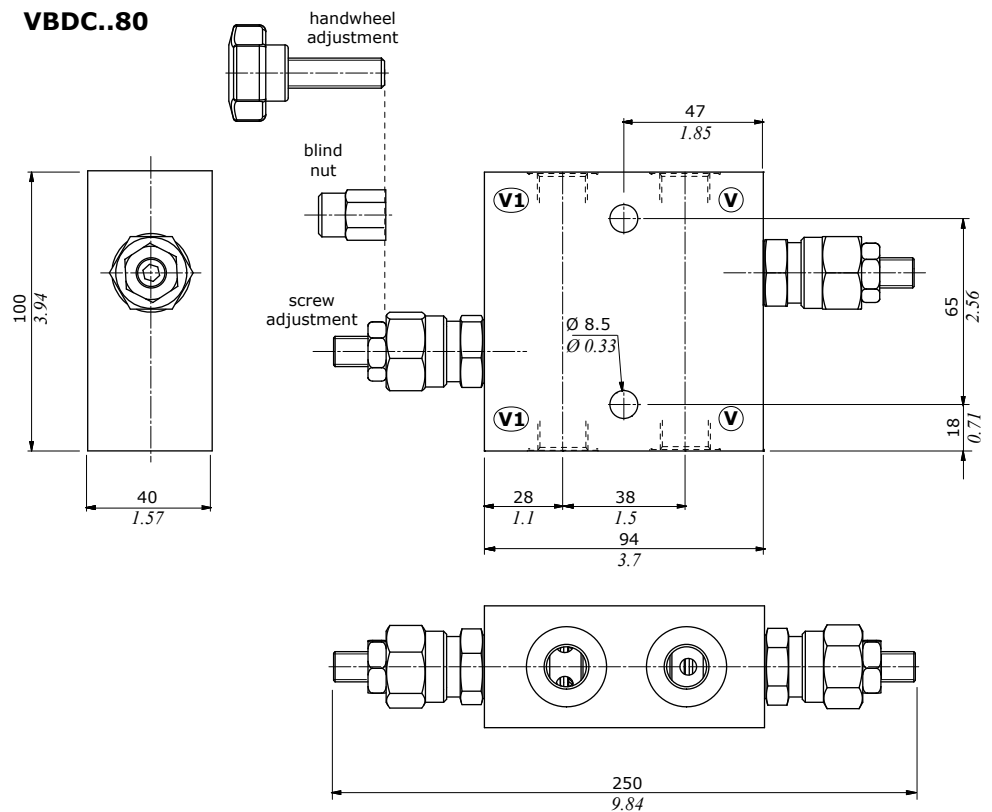
### VBDC..35



Valve type	All ports
VBDC..3502	G3/8
VBDC..3503	G1/2

Dimensions are in mm-in

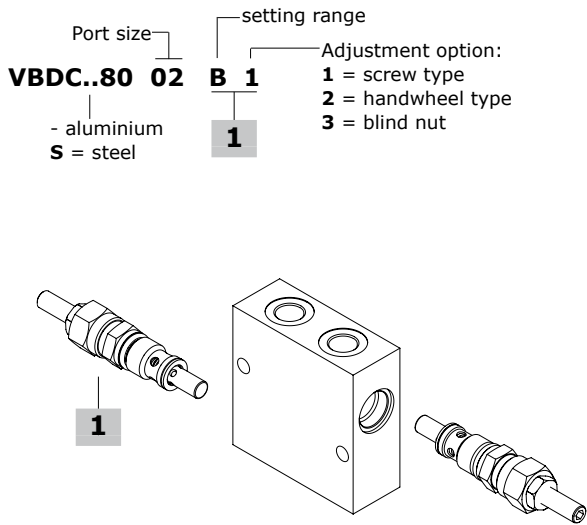
### VBDC..80



Valve type	All ports
VBDC..8003	G1/2
VBDC..8004	G3/4

Dimensions are in mm-in

**Ordering codes and description composition**



Type	Setting range bar (psi)	Std. setting bar (psi)
<b>VMD..35</b>	<b>A</b> 5-50 (72.5-725)	40 (580)
	<b>B</b> 40-210 (580-3050)	100 (1450)
	<b>C</b> 100-350 (1450-5100)	100 (1450)
<b>VMD..80</b>	<b>A</b> 5-50 (72.5-725)	40 (580)
	<b>B</b> 20-260 (290-3770)	100 (1450)
	<b>C</b> 120-350 (1750-5100)	120 (1740)

**VBDC..35 - VBDC..80 complete valves**

Standard setting 100 bar @ 3 l/min (1450 psi @ 0.79 US gpm)

TYPE	CODE	DESCRIPTION
<b>Configuration with G3/8 standard thread</b>		
<b>VBDC3502B1</b>	1145221100	Aluminium body, setting range 40-210 bar (580-3045 psi)
<b>VBDCS3502B1</b>	1145222100	Steel body, setting range 40-210 bar (580-3045 psi)
<b>Configuration with G1/2 standard thread</b>		
<b>VBDC3503B1</b>	1145221101	Aluminium body, setting range 40-210 bar (580-3045 psi)
<b>VBDCS3503B1</b>	1145222101	Steel body, setting range 40-210 bar (580-3045 psi)
<b>Configuration with G3/4 standard thread</b>		
<b>VBDC8004B1</b>	1145231100	Aluminium body, setting range 20-260 bar (290-3770 psi)
<b>VBDCS8004C1</b>	1145232100	Steel body, setting range 120-350 bar (1740-5070 psi)

For different configurations and SAE thread please contact our Sales Dpt.

**1 Direct acting pressure relief valves**

Standard setting 100 bar @ 3 l/min (1450 psi @ 0.79 US gpm)

TYPE	CODE	DESCRIPTION
<b>For VBDC..35 valve</b>		
<b>VMDC35B1(M20X1,5)</b>	1100220400	Screw adjustment from 40 to 210 bar (580-3050 psi)
<b>For VBDC..80 valve</b>		
<b>VMDC80B1(M26X1,5)</b>	1100230400	Screw adjustment from 40 to 260 bar (580-3770 psi)

**Rating diagrams**

