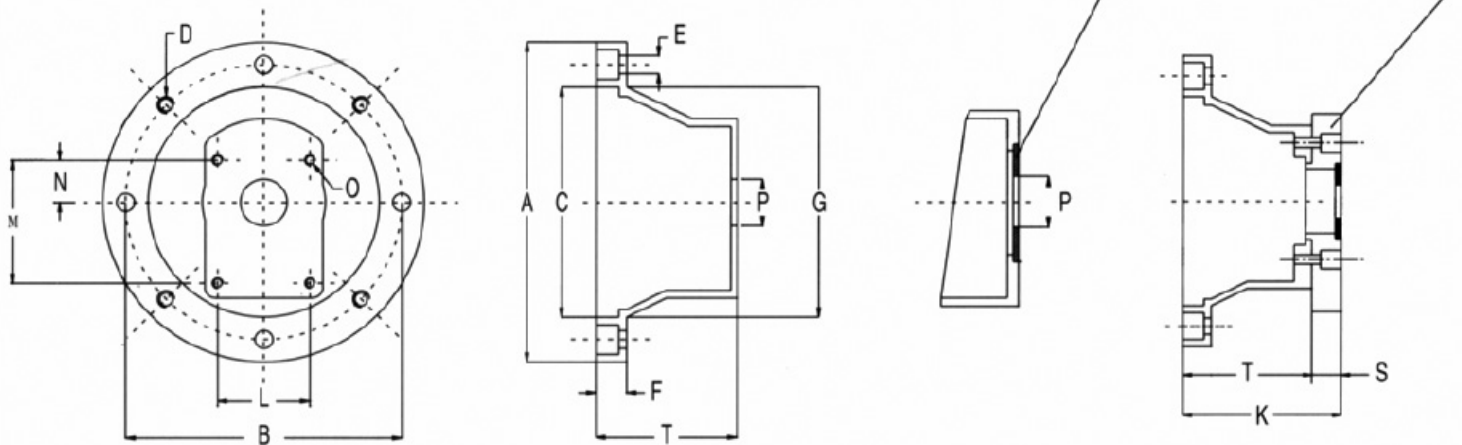


BH - Bell-housings

Conventional rectangular flanged external gear pumps.



EL. MOTOR B5-4 POLES		BELL-HOUSING			A	B	C	D	E	F	G	L	M	N	O	P	S	T	K	
Type	Kw	WITHOUT ADAPTOR	PUMP	WITH ADAPTOR RING																
71	0,25 0,37	BH161/01	05M	BH161C/01+AR1/01	160	130	110	M8	9	14	110	-	66	25,6	M6	22	-	70	-	
		BH161/01	05T	BH161C/01+AR1/01								-	66	25,6	M6	22				
		BH161/02	1PM	BH161C/02+AR1/02								52,4	72	26,2	M6	25,4				-
		BH161/03	1MM	BH161C/03+AR1/03								56	73	24,5	M6	30				-
		BH161/16	1ZB									40	40	10,3	M8	32				-
80	0,55 0,75	BH202/01	05M		200	165	130	M10	11,5	16	136	-	66	25,6	M6	22	-	98	-	
		BH202/01	05T									-	66	25,6	M6	22				
		BH202/02	1PM	BH202C/02+AR3/02								52,4	72	26,2	M6	25,4				-
		BH202/03	1MM	BH202C/03+AR3/03								56	73	24,5	M6	30				-
		BH202/16	1ZB									40	40	10,3	M8	32				-
		BH202/04	02M-02C	BH202C/04+AR3/04								71,5	96	32,5	M8	36,5				-
		BH202/17	2ZF									72	100	34,5	M8	80				-
		-	03M	BH202/17+FR10C/05+AR3/06								98,5	128	43	M10	50,8				16
		-	03C	BH202/17+FR10C/06+AR3/06								98,5	128	42	M10	50,8				16
-	03T	BH202/17+FR10C/07+AR3/06	98,5	137	45	M10	50,8	16												
90	1,1 1,5	BH202/01	05M		200	165	130	M10	11,5	16	136	-	66	25,6	M6	22	-	98	-	
		BH202/01	05T									-	66	25,6	M6	22				
		BH202/02	1PM	BH202C/02+AR3/02								52,4	72	26,2	M6	25,4				-
		BH202/03	1MM	BH202C/03+AR3/03								56	73	24,5	M6	30				-
		BH202/16	1ZB									40	40	10,3	M8	32				-
		BH202/04	02M-02C	BH202C/04+AR3/04								71,5	96	32,5	M8	36,5				-
		BH202/17	2ZF									72	100	34,5	M8	80				-
		-	03M	BH202/17+FR10C/05+AR3/06								98,5	128	43	M10	50,8				16
		-	03C	BH202/17+FR10C/06+AR3/06								98,5	128	42	M10	50,8				16
-	03T	BH202/17+FR10C/07+AR3/06	98,5	137	45	M10	50,8	16												
100 112	2,2 3 4	BH252/01	05M		250	215	180	M12	13,5	20	182	-	66	25,6	M6	22	-	110	-	
		BH252/01	05T									-	66	25,6	M6	22				
		BH252/02	1PM	BH252C/02+AR3/02								52,4	72	26,2	M6	25,4				-
		BH252/03	1MM	BH252C/03+AR3/03								56	73	24,5	M6	30				-
		BH252/16	1ZB									40	40	10,3	M8	32				-
		BH252/04	02M-02C	BH252C/04+AR3/04								71,5	96	32,5	M8	36,5				-
		BH252/17	2ZF									72	100	34,5	M8	80				-
		-	03M	BH252/17+FR10C/05+AR3/06								98,5	128	43	M10	50,8				16
		-	03C	BH252/17+FR10C/06+AR3/06								98,5	128	42	M10	50,8				16
-	03T	BH252/17+FR10C/07+AR3/06	98,5	137	45	M10	50,8	16												
132	5,5 7,5	BH303/04	02M-02C	BH303C/04+AR3/04	300	265	230	M12	13,5	20	234	71,5	96	32,5	M8	36,5	-	139	-	
		BH303/17	2ZB									72	100	34,5	M8	80				
	5,5 7,5 9	BH303/04	02M-02C									71,5	96	32,5	M8	36,5				-
		BH303/17	2ZF									72	100	34,5	M8	80				-
		BH303/05	03M	BH303C/05+AR3/06								98,5	128	43	M10	50,8				-
		BH303/06	03C	BH303C/06+AR3/06								98,5	128	42	M10	50,8				-
		BH303/07	03T	BH303C/07+AR3/06								98,5	137	45	M10	50,8				-