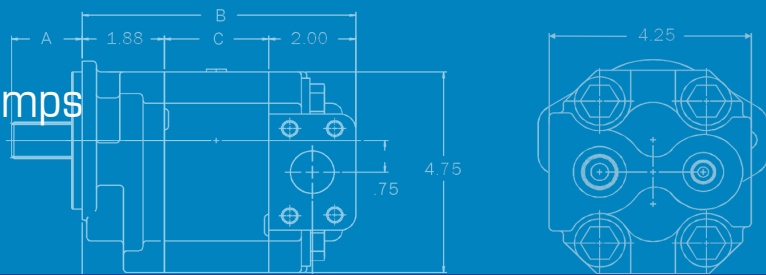


Large Displacement Sleeve Bushing Pumps

360 SERIES

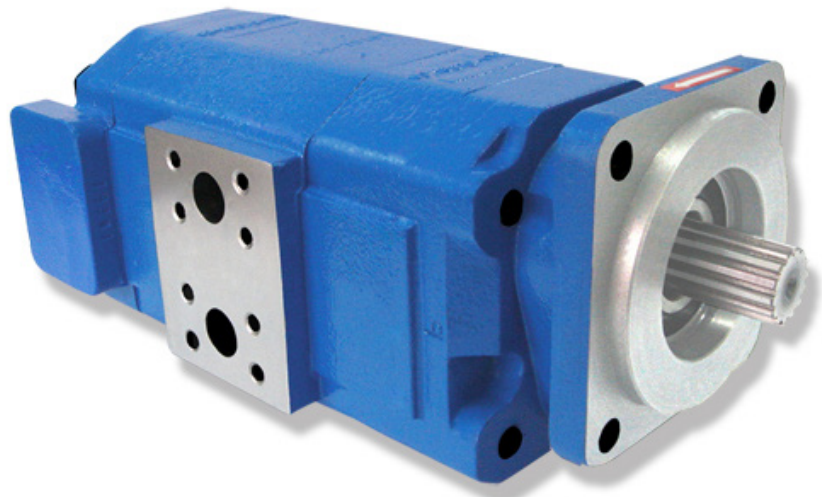


Precision-Engineered Fluid Power Products

The Sensible Choice for Pumps & Motors

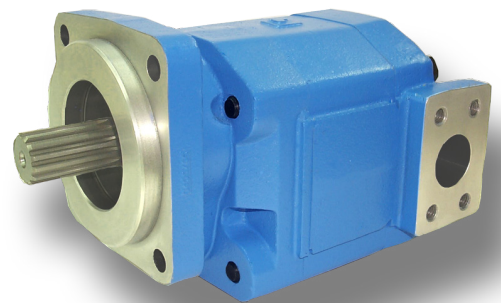


Big Winches
Cranes
Mobile Crushers &
Screens
Refuse Collection
Roll Off Trucks
Hoist Trucks



Features

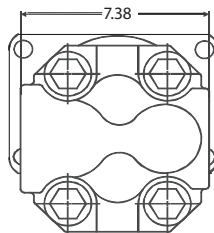
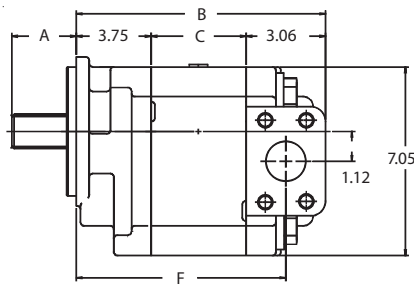
- Heavy duty sleeve bushing design in a large frame size
- Working pressure up to 3500 PSI
- Cubic inch displacements from 1.80 through 9.00
- Speeds up to 2400 RPM
- Flows up to 93 GPM
- Doweled and high strength cast iron construction
- High strength alloy steel gear and shaft sets
- Split flange & SAE ORB ports are available
- Pressure balanced wear plates maintain high pump efficiency throughout all operating ranges
- Both single inlet/single outlets and single inlet/dual outlet bearing carriers
- 100% factory tested



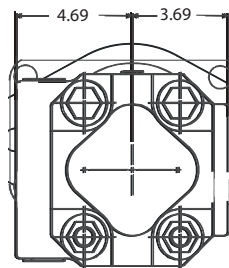
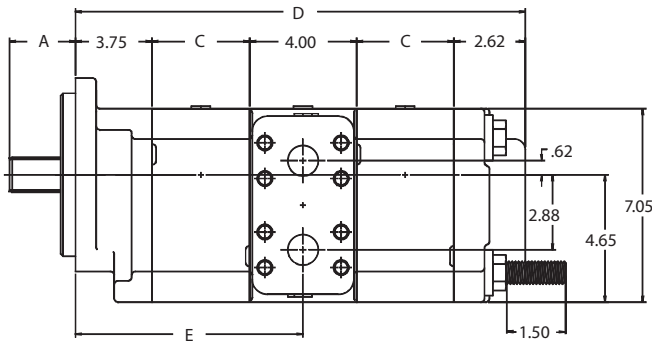


Pumps & Motors

Dimensional Data



- A. 2.19" SAE "C" shaft shown, other shafts available
- B. 7.31" plus gear width
- C. 0.50" plus gear width
- D. 11.38" plus total gear width
- E. 6.25" plus front gear width
- F. 5.79" plus gear width



Permco is a leading manufacturer of high-pressure hydraulic gear/vane pumps and motors, flow dividers, intensifiers, and accessories. Available in a wide variety of sizes and configurations to suit your application needs.

Product Information

Pump / Motor

Gear Size	Displ Cu.In	Theo. GPM 1000 RPM	Max RPM	Max PSI
0.50	1.80	7.8	2400	3500
0.75	2.70	11.7	2400	3500
1.00	3.60	15.6	2400	3500
1.25	4.50	19.5	2400	3500
1.50	5.40	23.4	2400	3500
1.75	6.30	27.3	2400	3500
2.00	7.20	31.2	2400	3500
2.25	8.10	35.1	2400	3250
2.50	9.00	39.0	2400	3000

Our Online Support is available 24/7/365 for your needs!

Email: support@permco.com

Call: (800) 626.2801

