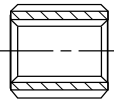


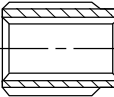


SPLINED BUSHES, SLIP SLEEVES, ADAPTORS FOR HYDRAULIC PUMP AND MOTOR DRIVES

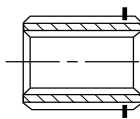
SPLINED BUSHES, SLIP SLEEVES & ADAPTORS



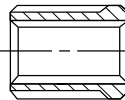
TYPE 1
PLAIN DYNAGEAR



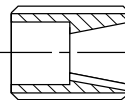
TYPE 2
EXTENDED DYNAGEAR



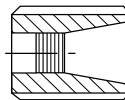
TYPE 3
SNAP RING (EUROPE)



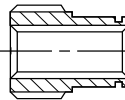
TYPE 4
FUNK GEARBOX



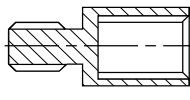
TYPE 5
DIN 1:8 TAPER WITH KEY
Has recess for nut



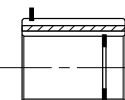
TYPE 6
DIN TAPER THREADED
CW pumps only



TYPE 7
CONQUIP FRONT PTO



TYPE 8
MALE/FEMALE



TYPE 9
TERREL DURST GEARBOX

Type	Male Spline	Female Spline Or Round Bore	Overall Length	Part Number
1	15T 1" 16/32	Round 5/8" keyed	0.79"	58/03/03988
1	15T 1" 16/32	9T 5/8" 16/32	0.79"	58/03/03987
1	14T 1 1/4" 12/24	9T 5/8" 16/32	1.125"	58/03/10001
1	14T 1 1/4" 12/24	13T 7/8" 16/32	1.125"	58/03/10003
1	13T 1 3/4" 8/16	13T 7/8" 16/32	3.000"	58/03/01899
1	13T 1 3/4" 8/16	14T 1 1/4" 12/24	1.200"	58/03/20006
1	13T 1 3/4" 8/16	14T 1 1/4" 12/24	3.000"	58/03/01694
1	13T 1 3/4" 8/16	21T 1 3/8" 16/32	1.200"	58/03/20007
1	13T 1 3/4" 8/16	16T 35mm DIN	1.200"	58/03/20011
2	6T 1 3/4" Straight	6T 1.0" Straight	2.400"	58/03/01589
2	13T 1 3/4" 8/16	9T 5/8" 16/32	1.375"	58/03/20001
2	13T 1 3/4" 8/16	11T 3/4" 16/32	1.200"	58/03/20002
2	13T 1 3/4" 8/16	13T 7/8" 16/32	1.375"	58/03/20003
2	13T 1 3/4" 8/16	18T 25mm DIN	1.375"	58/03/20020
2	13T 1 3/4" 8/16	6T 1.0" Straight	1.200"	58/03/20005
2	13T 1 3/4" 8/16	15T 1.0" 16/32	1.375"	58/03/20004
2	13T 1 3/4" 8/16	14T 30mm DIN	1.560"	58/03/20010
2	13T 1 3/4" 8/16	Round 5/8" Keyed	1.375"	58/03/20012
2	13T 1 3/4" 8/16	Round 7/8" Keyed	1.375"	58/03/20014
2	13T 1 3/4" 8/16	Round 1.0" Keyed	1.375"	58/03/20015
3	23T 48mm DIN	12mm pilot bore	35mm	32/03/30000
3	13T 7/8" 16/32	9T 5/8" 16/32	1.312"	58/03/01369
3	15T 1" 16/32	9T 5/8" 16/32	1.500"	58/03/01666
3	14T 1 1/4" 12/24	11T 3/4" 16/32	45mm	58/03/10002L
3	14T 1 1/4" 12/24	13T 7/8" 16/32	1.500"	58/03/01698
3	14T 1 1/4" 12/24	13T 7/8" 16/32	2.000"	58/03/01698L
3	14T 1 1/4" 12/24	15T 1.0" 16/32	1.500"	58/03/00714
3	14T 1 1/4" 12/24	Round 16mm Keyed	45mm	58/03/10072
3	18T 35mm DIN	9T 5/8" 16/32	1.065"	T2060038
3	23T 48mm DIN	11T 3/4" 16/32	45mm	32/03/30002
3	23T 48mm DIN	13T 7/8" 16/32	45mm	32/03/30003
3#	23T 48mm DIN	13T 7/8" 16/32	45mm	32/03/30003C
3	23T 48mm DIN	Taper DIN 2 1:8	45mm	32/03/30016
3	23T 48mm DIN	18T 25mm DIN	45mm	32/03/30020
3	23T 48mm DIN	15T 1.0" 16/32	45mm	32/03/30004
3	23T 48mm DIN	15T 1.0" 16/32	29mm	32/03/30004S
3	23T 48mm DIN	14T 30mm DIN	45mm	32/03/30010
3	23T 48mm DIN	14T 1 1/4" 12/24	45mm	32/03/30006
3	23T 48mm DIN	14T 1 1/4" 12/24	60mm	32/03/30006L
3	23T 48mm DIN	21T 1 3/8" 16/32	45mm	32/03/30007
3	23T 48mm DIN	16T 35mm DIN	45mm	32/03/30011
3	23T 48mm DIN	16T 35mm DIN	61mm	32/03/30011L
3	23T 48mm DIN	17T 1 1/2" 12/24	45mm	32/03/30032
3	23T 48mm DIN	17T 1 1/2" 12/24	55mm	32/03/30032L
3	23T 48mm DIN	23T 1 1/2" 16/32	1 3/4"	32/03/30043
3	29T 62mm DIN	14T 1 1/4" 12/24	55mm	32/03/40006
3	29T 62mm DIN	13T 1 3/4" 8/16	55mm	32/03/40008
3	29T 62mm DIN	23T 48mm DIN	49mm	T2062004
3	36T 80mm DIN	13T 1 3/4" 8/16	75mm	32/03/50008
4	13T 1 3/4" 8/16	13T 7/8" 16/32	2.000"	028055
4	13T 1 3/4" 8/16	15T 1" 16/32	2.000"	028584
4	13T 1 3/4" 8/16	14T 1 1/4" 12/24	2.000"	028056
4	13T 1 3/4" 8/16	21T 1 3/8" 16/32	2.000"	028271
5	15T 1" 16/32	Taper DIN 2 1:8	0.79"	58/03/03985
5	13T 1 3/4" 8/16	Taper DIN 2	40mm	58/03/20016
5	13T 1 3/4" 8/16	Taper DIN 3	40mm	58/03/20017
6	13T 7/8" 16/32	Taper DIN 2 1:8	1.750"	54/03/00164
7	6T 1 3/4" Straight	6T 1.0" Straight	1.700"	58/03/00965
8	23T 48mm DIN	13T 1 3/4" 8/16	90mm	32/03/30008
9	13T 1 3/4" 8/16	9T 5/8" 16/32	2.000"	TS20900244
9	13T 1 3/4" 8/16	13T 7/8" 16/32	1.938"	TS20900245
9	13T 1 3/4" 8/16	15T 1.0" 16/32	1.750"	TS20900246
9	13T 1 3/4" 8/16	19T 1 1/4" 16/32	2.375"	TO12160131
9	13T 1 3/4" 8/16	14T 1 1/4" 12/24	1.750"	TS20900247
9	13T 1 3/4" 8/16	21T 1 3/8" 16/32	1.850"	TS12160120

32/03/30003C Has extra circlip and is counterbored on one end.

Most items are manufactured from alloy steel. Actual materials, finish and treatment may vary according to the origin of the part. Overall lengths may vary from that indicated depending on origin of the part. If length important check with our sales office. Other sizes may be available - consult sales office