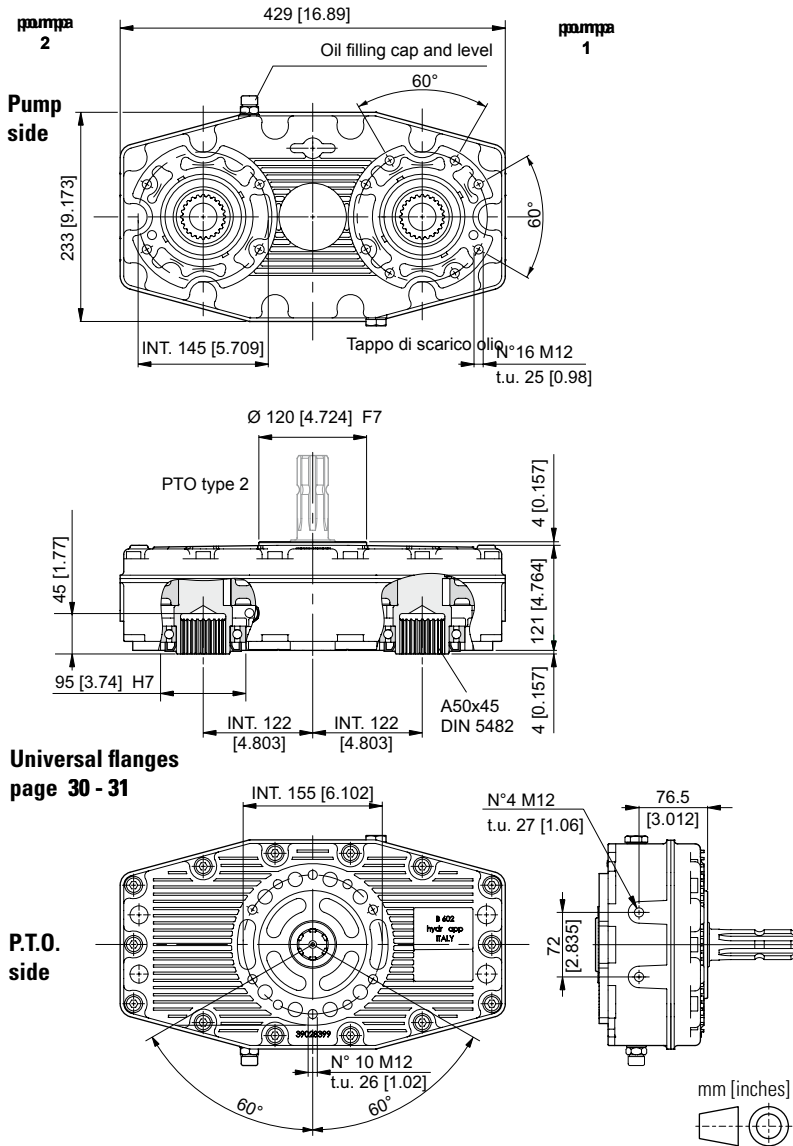
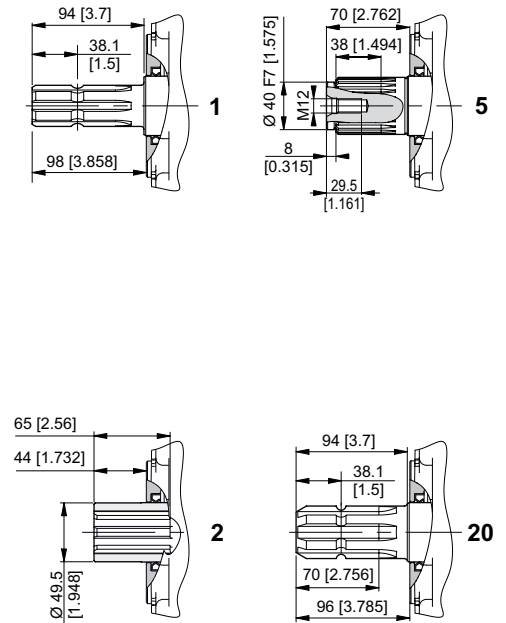


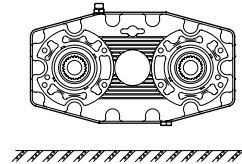
SPLITTER GEARBOX FOR PUMPS WITH EUROPEAN UNIFIED FLANGE / SAE / ISO



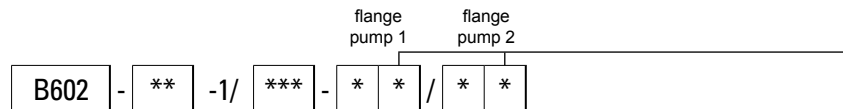
P.T.O.



Mounting positions



ORDERING CODE



B602 = Splitter gearbox (aluminium body)

P.T.O.

- 1** = Male 1" 3/8 DIN 9611
- 2** = Female 1" 3/8 DIN 9611
- 5** = Male Z23 DIN 5482
- 20** = Male 1" 3/4

Type (see page 30 - 31)	Flange position			
	1	2	3	4
D / G				
E / F				
A / B / C / L / M	—			

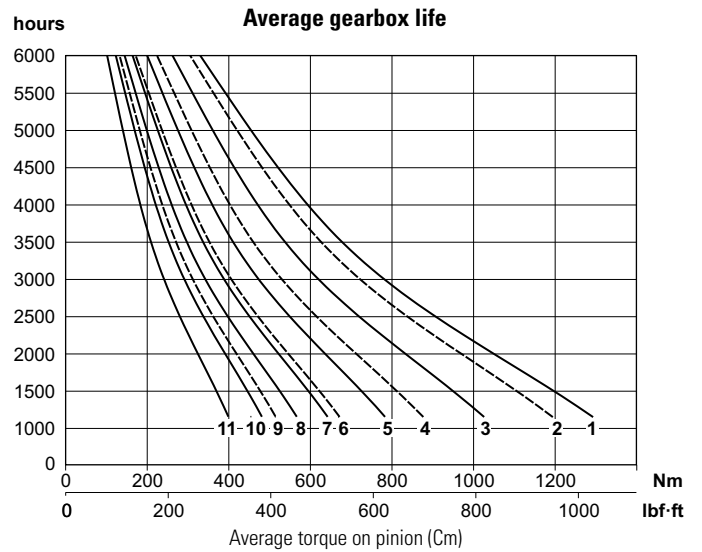
Transmission ratio

1 = 1 : 1.0	3 = 1 : 3.0
1,5 = 1 : 1.5	3,4 = 1 : 3.4
2 = 1 : 2.0	3,8 = 1 : 3.8
2,6 = 1 : 2.6	

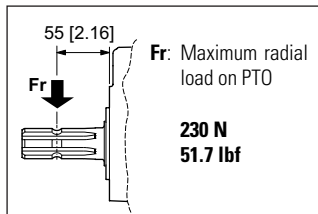
Coupling for pump to be required to our sales department.

TECHNICAL DATA

Transmission ratio	Maximum torque Nm [lbf-ft]				Weight kg [lb]
	540 rpm		1000 rpm		
	C1*	C2*	C1*	C2*	
1 : 1.0	1292 [953]	680 [502]	1193 [880]	628 [463]	17,5 [38,6]
1 : 1.5	1025 [756]	539 [398]	876 [646]	461 [340]	16,2 [35,7]
1 : 2.0	783 [578]	412 [304]	671 [495]	353 [260]	16,1 [35,5]
1 : 2.6	642 [474]	338 [249]	323 [238]	170 [125]	16,1 [35,5]
1 : 3.0	567 [418]	298 [220]	—	—	16,3 [35,9]
1 : 3.4	481 [354]	253 [187]	—	—	16,3 [35,9]
1 : 3.8	399 [294]	210 [155]	—	—	16,3 [35,9]



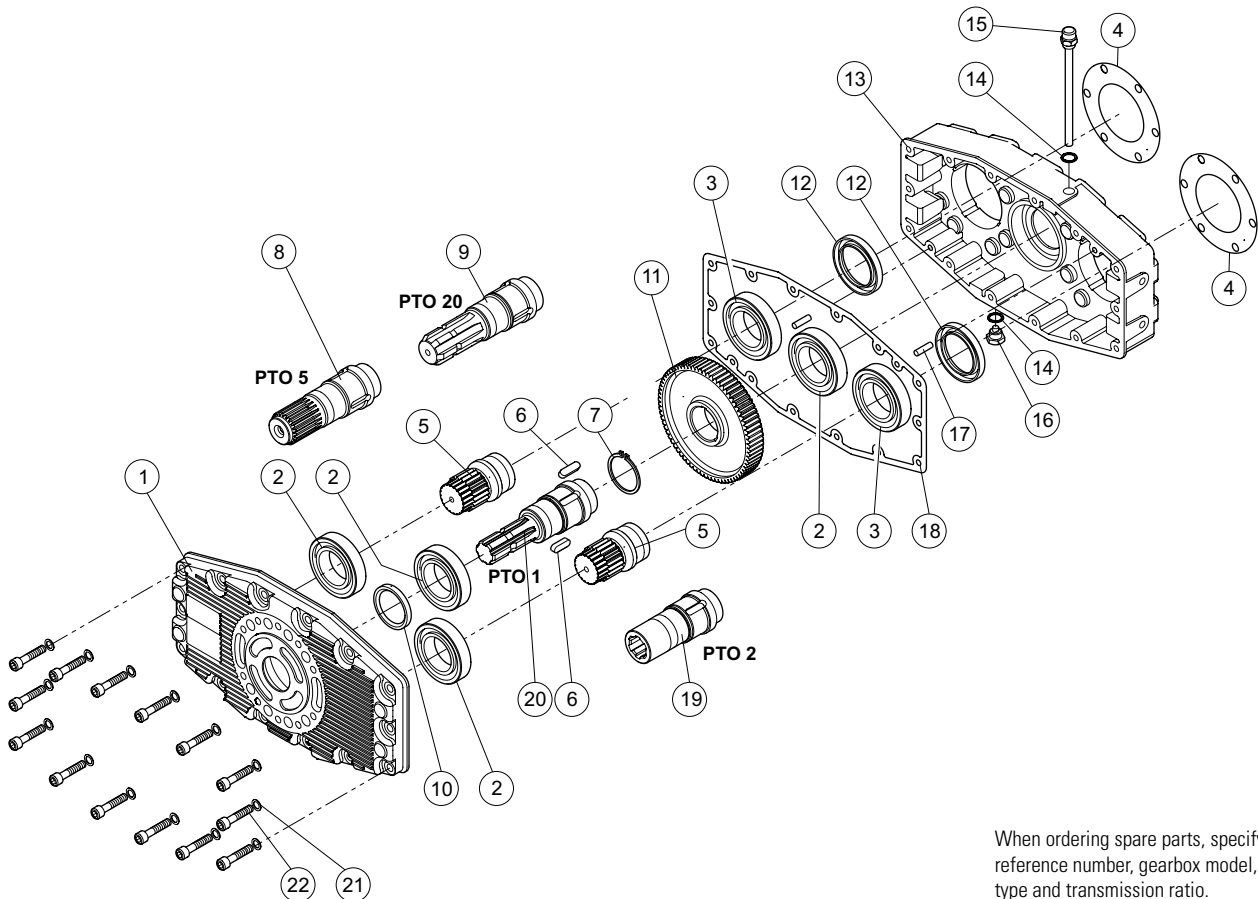
* Maximum torque on pump:
C1= maximum starting torque; C2= maximum torque for continuous duty.



Oil
liters [US gallon]
1.70 [0.45]

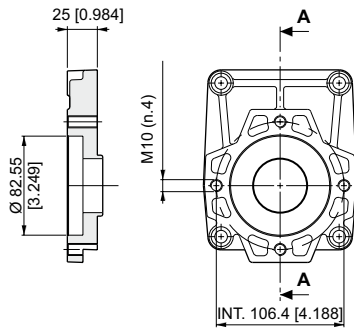
Input rpm		Output (transmission ratio)						
		1 : 1.0	1 : 1.5	1 : 2.0	1 : 2.6	1 : 3.0	1 : 3.4	1 : 3.8
540	curve	1	3	5	7	8	10	11
	rpm	540	810	1080	1408	1620	1836	2030
1000	curve	2	4	6	9	—	—	—
	rpm	1000	1500	2000	2607	—	—	—

SPARE PARTS

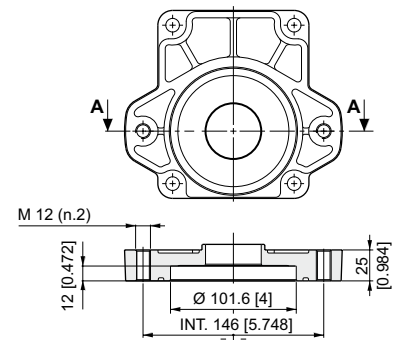


When ordering spare parts, specify reference number, gearbox model, PTO type and transmission ratio.

FLANGES ML52-B502

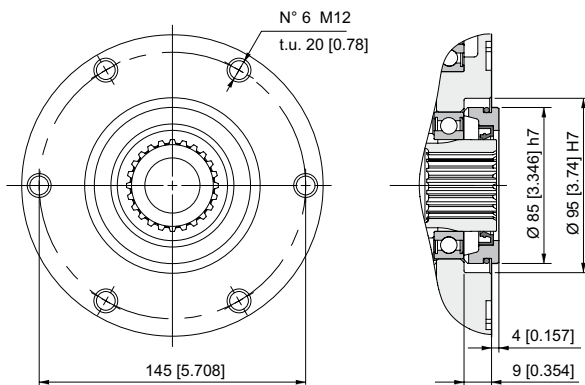


Type "S"
SAE A (2-4 holes) - ML52
 Kit flange and screws: 14040004

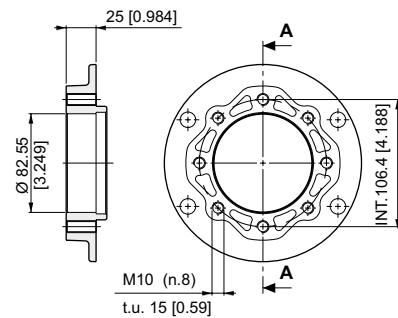


Type "T"
SAE B (2-4 holes) - ML52 - B502
 Kit flange and screws: 14040006

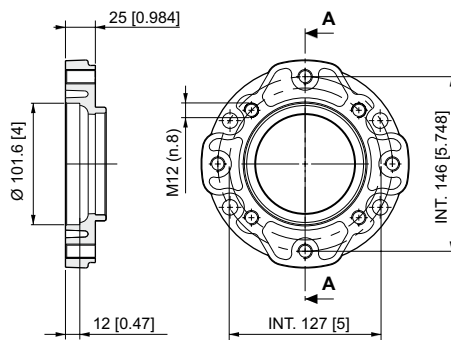
UNIVERSAL FLANGES B580 - B600 - B582 - B602



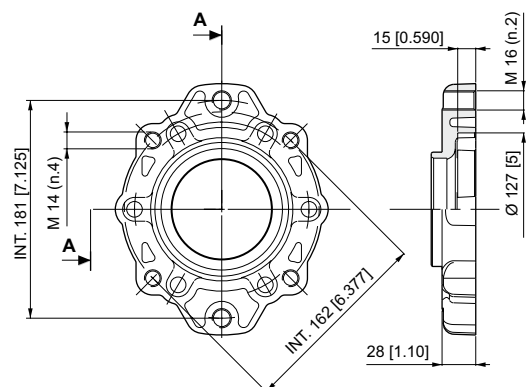
**Gearbox
 universal flanges**



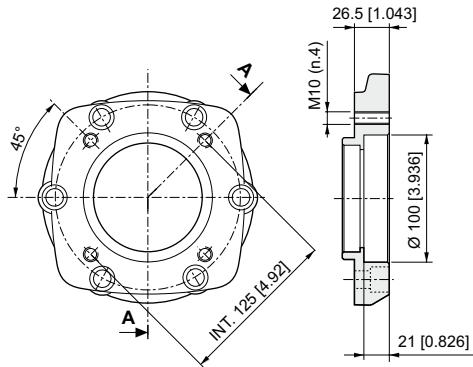
Type "A"
SAE A (2-4 holes)
 Kit flange and screws: 14050012



Type "B"
SAE B (2-4 holes)
 Kit flange and screws: 14050011

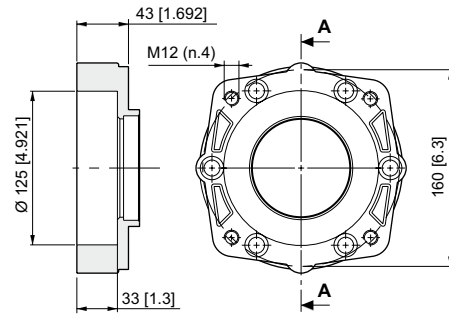


Type "C"
SAE C (2-4 holes)
 Kit flange and screws: 14050055



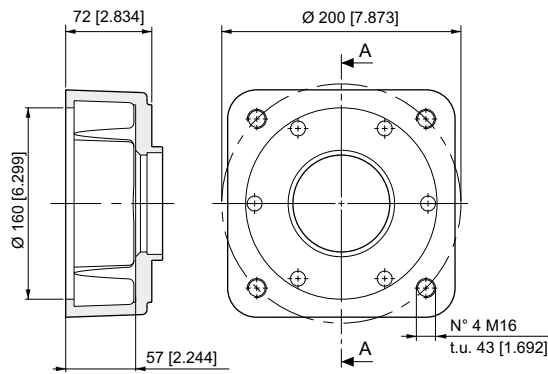
Type "L"
ISO 1

Kit flange and screws: 14050010



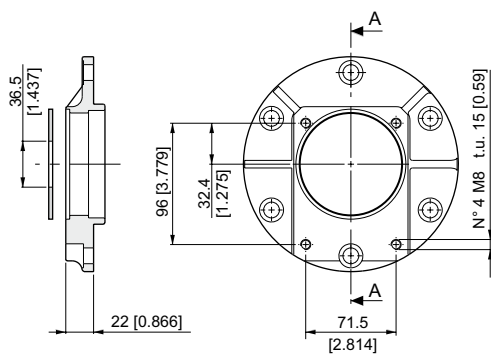
Type "M"
ISO 2

Kit flange and screws: 14050013



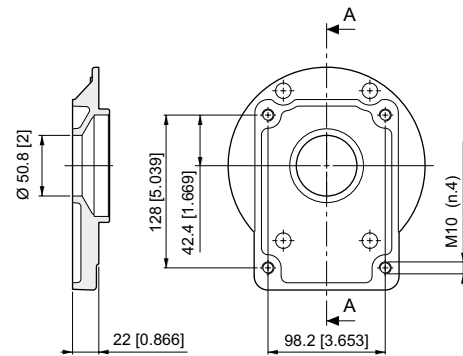
Type "P"
ISO 3

Kit flange and screws: 14050060



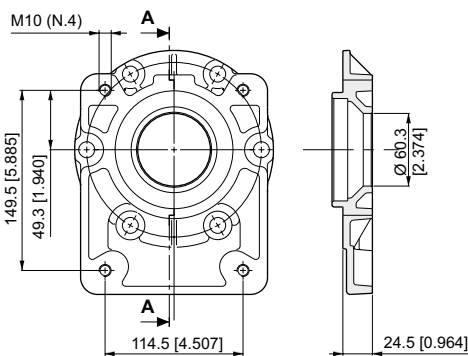
Type "D"
GR 2

Kit flange and screws: 14050008



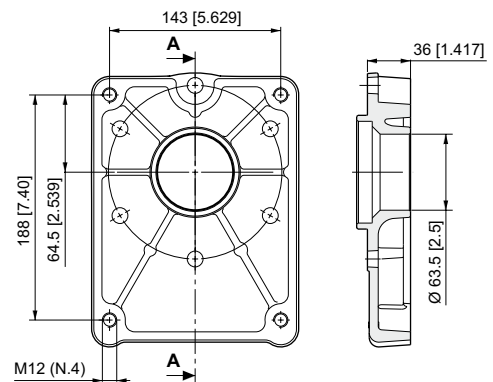
Type "E"
GR 3

Kit flange and screws: 14050005



Type "F"
GR 3,5

Kit flange and screws: 14050006



Type "G"
GR 4

Kit flange and screws: 14050062