

Fixed Displacement Vane Pump HV2020 Series

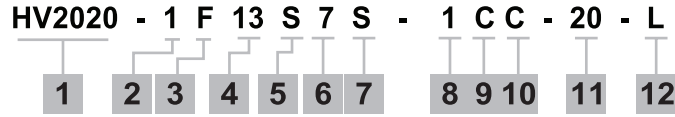
Specifications

Model	Cartridge Position	Ring Size Delivery at 1200 r/min & 7 bar (100 psi) USgpm	Geometric Displacement cm ³ /r (in ³ /r)	Delivery at 1500 r/min & 7 bar (100 psi) L/min (USgpm)	Maximum Intermittent Pressure bar (psi)	Maximum Continuous Pressure bar (psi)	Maximum Speed rpm	Weight kg (lb)
HV2020	Shaft End	5	16.4 (1.00)	23.60 (6.25)	175 (2500)	160 (2250)	3400	17.2 (37.8)
		6	19.5 (1.19)	28.39 (7.50)			3400	
		7	22.8 (1.39)	33.11 (8.75)			3000	
		8	26.5 (1.62)	37.85 (10.00)			2800	
		9	29.7 (1.81)	42.57 (11.25)			2800	
		10	34.1 (2.08)	47.30 (12.51)			2500	
		11	36.4 (2.22)	52.04 (13.75)			2500	
		12	39.0 (2.38)	56.77 (15.00)			2400	
	Cover End	13	42.4 (2.59)	61.50 (16.25)	150 (2200)	140 (2000)	2400	
		5	16.4 (1.00)	23.60 (6.25)	175 (2500)	175 (2500)	3000	
		6	19.5 (1.19)	28.39 (7.50)			3000	
		7	22.8 (1.39)	33.11 (8.75)			3000	
		8	26.5 (1.62)	37.85 (10.00)			2800	
		9	29.7 (1.81)	42.57 (11.25)			2800	
10	34.1 (2.08)	47.30 (12.51)	2500					
	11	36.4 (2.22)	52.04 (13.75)			2500		

* A transient (peak) pressure 10% over the continuous pressure rating for 0.5 seconds or less duration is allowed.

Fixed Displacement Vane Pump HV200 Series

Ordering Code : Double Pump

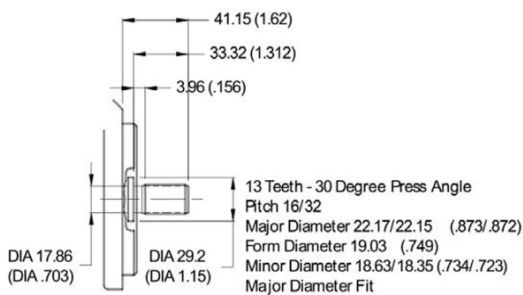
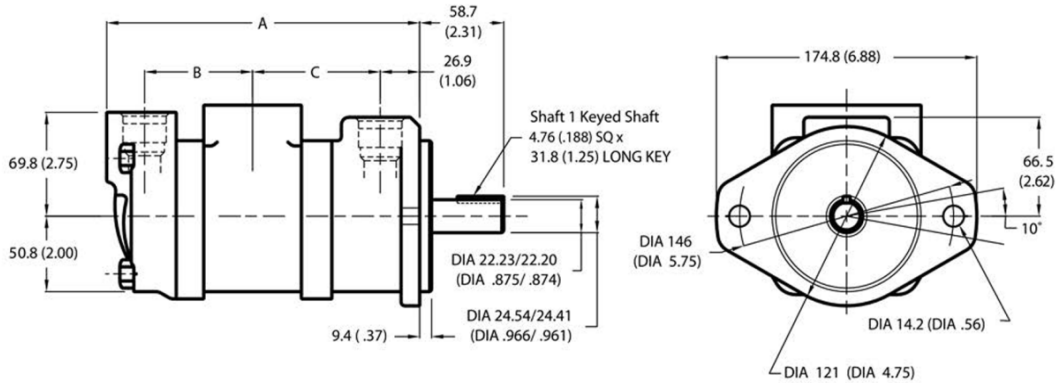
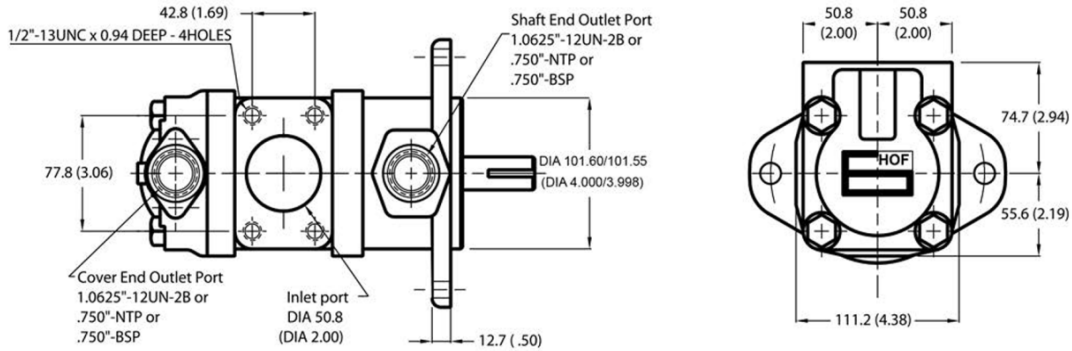


- | | |
|--|--|
| <p>1. Model :
HV2020 - Standard Cover
SAE B 2 bolts mounting flange J744</p> <p>2. Mounting
1 - Bolt Flange</p> <p>3. Inlet Port Connection
F - 4-bolt Flange Dia. 2.0"</p> <p>4. Displacement (at 1200 rpm)
Volumetric displacement cm³/rev (in³/rev)</p> <ul style="list-style-type: none"> 5 - 16.4 (1.00) 6 - 19.5 (1.19) 7 - 22.8 (1.39) 8 - 26.5 (1.62) 9 - 29.7 (1.81) 10 - 34.1 (2.08) 11 - 36.4 (2.22) 12 - 39.0 (2.38) 13 - 42.4 (2.59) <p>5. Shaft End Outlet Port Connection
S - 1" 1/16 - 12 UN(SAE#12)
P - 3/4" NPT
B - 3/4" BSP</p> <p>6. Displacement P2 (at 1200 rpm)
Volumetric displacement cm³/rev (in³/rev)</p> <ul style="list-style-type: none"> 5 - 16.4 (1.00) 6 - 19.5 (1.19) 7 - 22.8 (1.39) 8 - 26.5 (1.62) 9 - 29.7 (1.81) 10 - 34.1 (2.08) 11 - 36.4 (2.22) <p>7. Cover End Outlet Port Connection
S - 1" 1/16 - 12 UN(SAE#12)
P - 3/4" NPT
B - 3/4" BSP</p> | <p>8. Type of shaft
1 - Straight Keyed Shaft
11 - Splined Shaft</p> <p>9. Shaft End Outlet Port Position (Viewed from cover end)
A - Opposite inlet
B - 90° CCW from inlet
C - Inline with inlet
D - 90° CW from inlet</p> <p>10. Cover End Outlet Port Position (Viewed from cover end)
A - Opposite inlet
B - 90° CCW from inlet
C - Inline with inlet
D - 90° CW from inlet</p> <p>11. Design
Subject to change. Installation dimension remain the same for designs - 20 through -29</p> <p>12. Shaft Rotation (viewed from shaft end)
R - Turn right
L - Turn left</p> |
|--|--|

Fixed Displacement Vane Pump HV200 Series

Installation Dimension mm (inch)

Double Pump HV200



Shaft 11
Splined Shaft

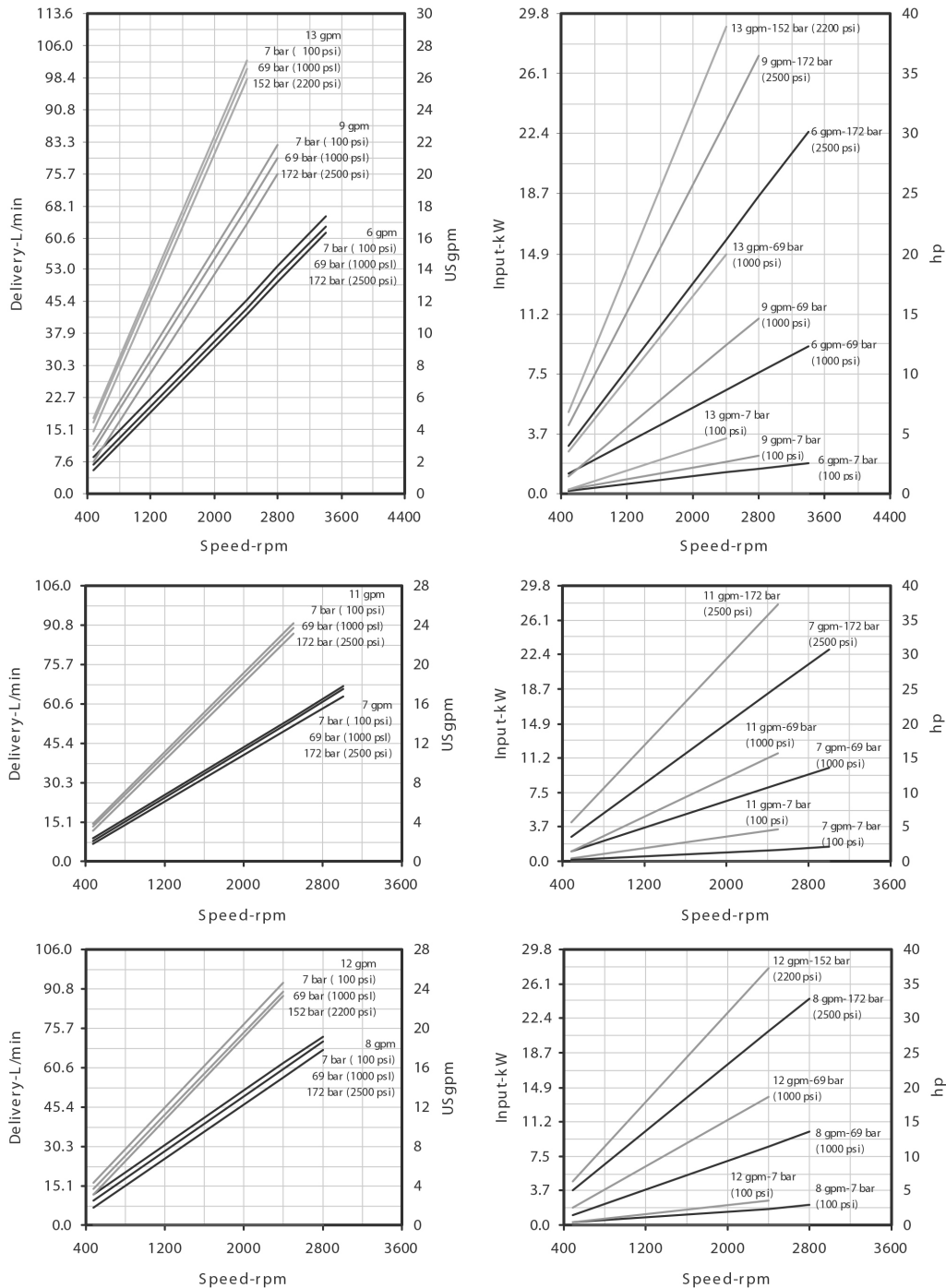
Delivery @ 1200 rpm & 7 bar (100psi)		Dimension		
Shaft End	Cover End	A	B	C
5, 6	5, 6	207.2 (8.16)	73.7 (2.90)	80.7 (3.18)
	7, 8, 9	213.6 (8.41)	80.0 (3.15)	
	10, 11	218.6 (8.61)	85.1 (3.35)	
7, 8, 9	5, 6	213.6 (8.41)	73.7 (2.90)	87.1 (3.43)
	7, 8, 9	220.0 (8.66)	80.0 (3.15)	
	10, 11	225.0 (8.86)	85.1 (3.35)	
10, 11	5, 6	218.7 (8.61)	73.7 (2.90)	92.2 (3.63)
	7, 8, 9	225.0 (8.86)	80.0 (3.15)	
	10, 11	229.9 (9.05)	85.1 (3.35)	
12, 13	5, 6	222.3 (8.75)	73.7 (2.90)	95.5 (3.76)
	7, 8, 9	228.3 (8.99)	80.0 (3.15)	
	10, 11	233.4 (9.19)	85.1 (3.35)	

Fixed Displacement Vane Pump HV200 Series

Performance Characteristics

HV20, Shaft End of HV20, Cover End of HV20

Based on viscosity 32 cSt (150 SSU) oil at 49°C (120°F) and pump inlet at 0 PSIG (14.7 PSIA)



For the Cover End cartridge, the speed could not exceed the maximum speed of the shaft End Cartridge.