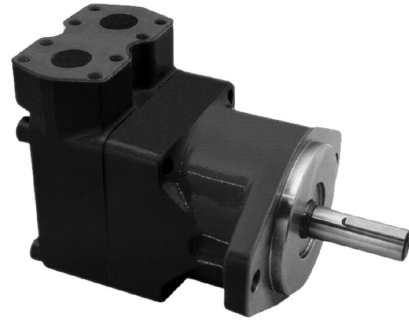


High Speed High Torque Vane Motor HM4C Series

Features

High speed and high-torque with maximum pressure of 175 bar, motors ranging from 24 to 80 cm³/r.

Up to 4000 RPM with 7 torques rating at your choice with options of 4 connection ports and choice of external and internal drain.

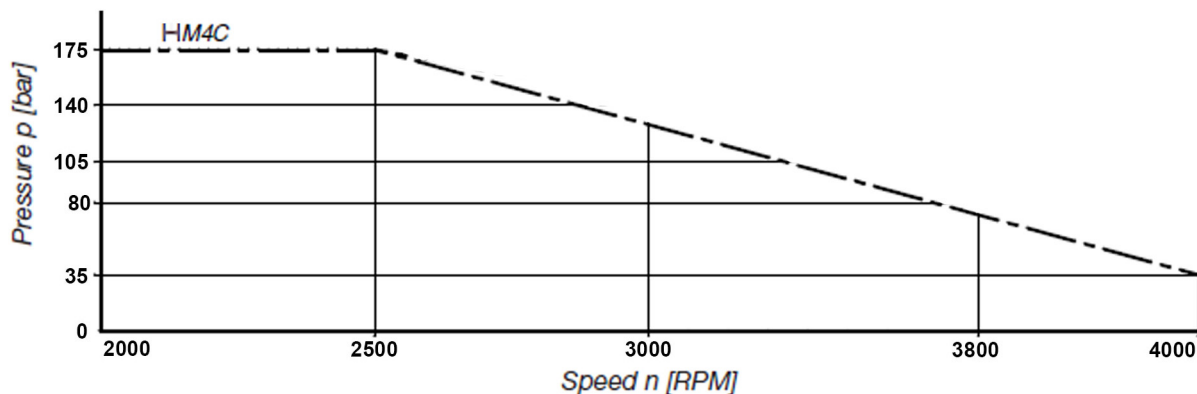


Specification

Model	Displacement	Theoretical, Displacement, V ₁	Torque T	Power at 100 RPM	Torque T	Power P	
		n = 2000 RPM at Δ p 175 bar					
		ml/rev ₁	Nm/bar	kW/bar	N,m	kW	
HM4C HM4C1	024	24,4	0,39	0,0040	60,5	12,7	
	027	28,2	0,45	0,0047	70,0	14,7	
	031	34,5	0,55	0,0058	86,8	18,0	
	043	46,5	0,74	0,0078	120,0	25,1	
	055	58,8	0,93	0,0098	149,0	31,2	
	067	71,1	1,13	0,0120	170,0	35,6	
	075	80,1	1,27	0,0130	198,0	41,5	

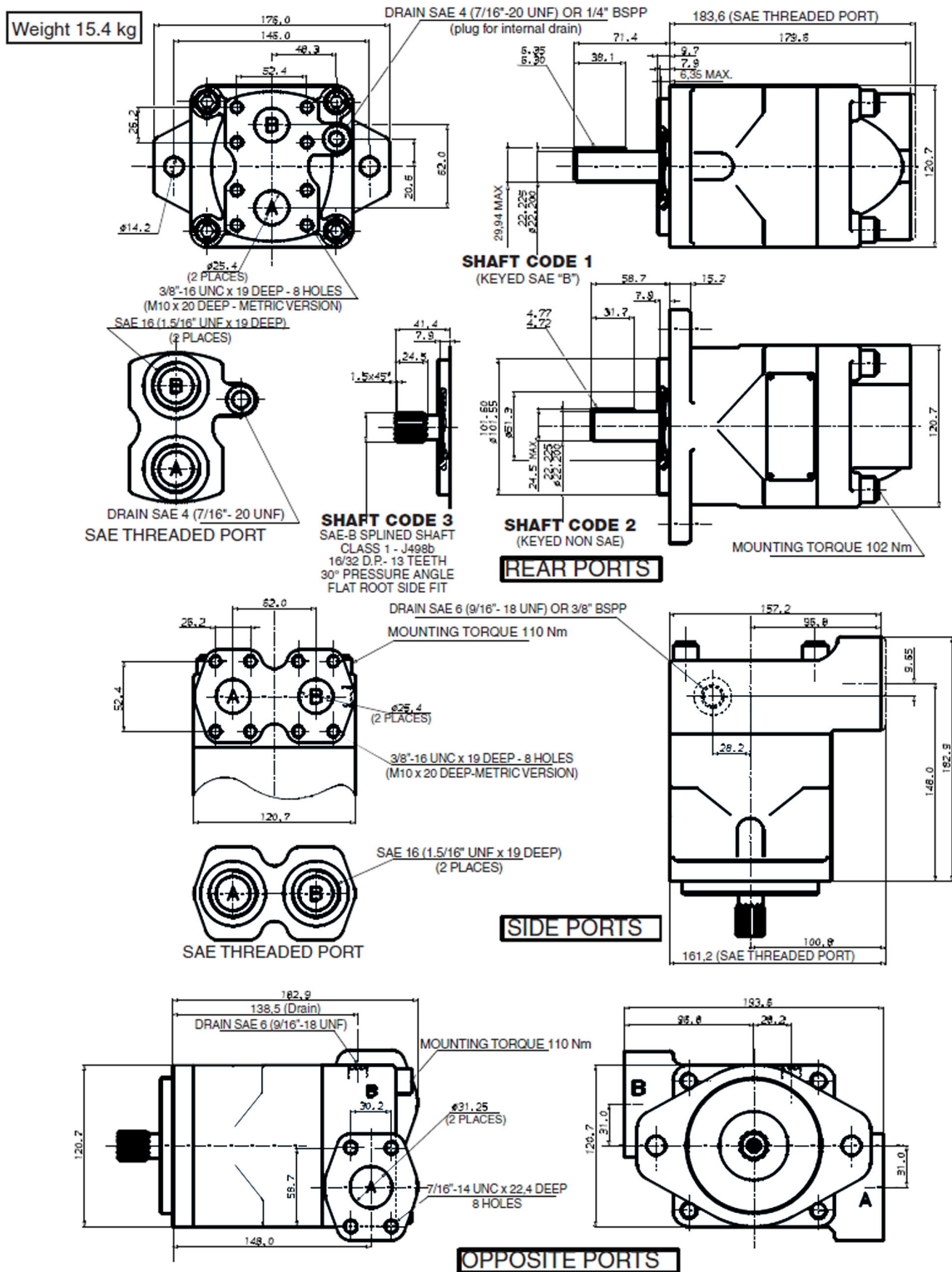
Internal drain : All these motors may be equiped with internal drain. Then the model number will be HM4C1.
For further information or if the performance characteristics outlined above do not meet your own particular requirements, please consult your local Parker representative.

Maximum speed and maximum continue pressure



High Speed High Torque Vane Motor HM4C Series

Installation Dimension mm (inch)



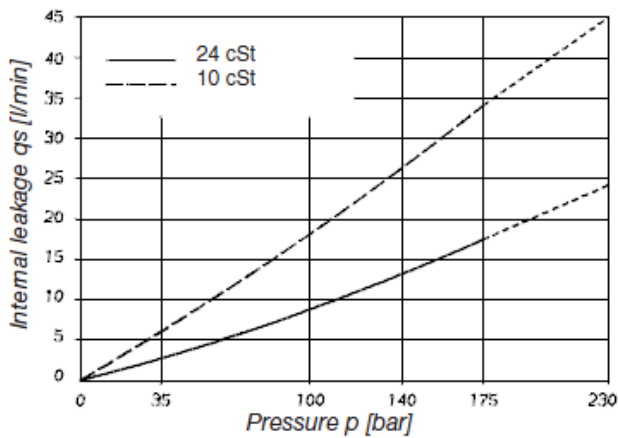
High Speed High Torque Vane Motor HM4C Series

Performance Characteristics

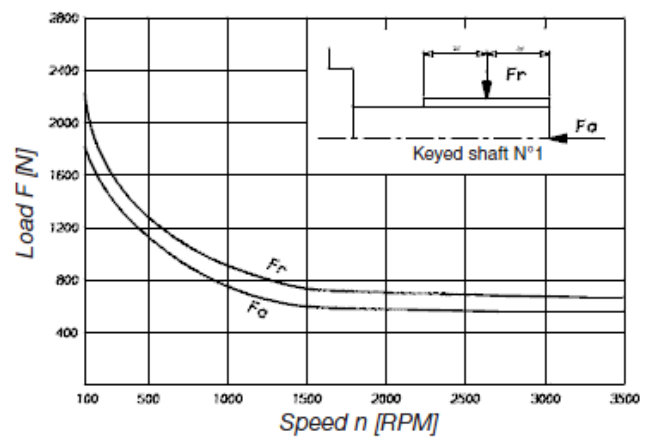
OPERATING CHARACTERISTICS - TYPICAL [24 cSt]

Series	Volumetric Displacement V_1	Input flow at $n = 2000$ RPM		Torque T at $n = 2000$ RPM	Power output at $n = 2000$ RPM
		Theoretical	at 175 bar Δp	at 175 bar Δp	at 175 bar Δp
	ml/rev.	l/min	l/min	Nm	kW
024	24,4	49,0	67,0	60,5	12,7
027	28,2	56,0	74,0	70,0	14,7
031	34,5	69,0	87,0	86,8	10,8
043	46,5	93,0	110,0	120,0	25,1
055	58,8	118,0	136,0	149,0	31,2
067	71,1	142,0	160,0	170,0	35,6
075	80,1	160,0	178,0	198,0	41,5

INTERNAL LEAKAGE



PERMISSIBLE RADIAL AND AXIAL LOADS

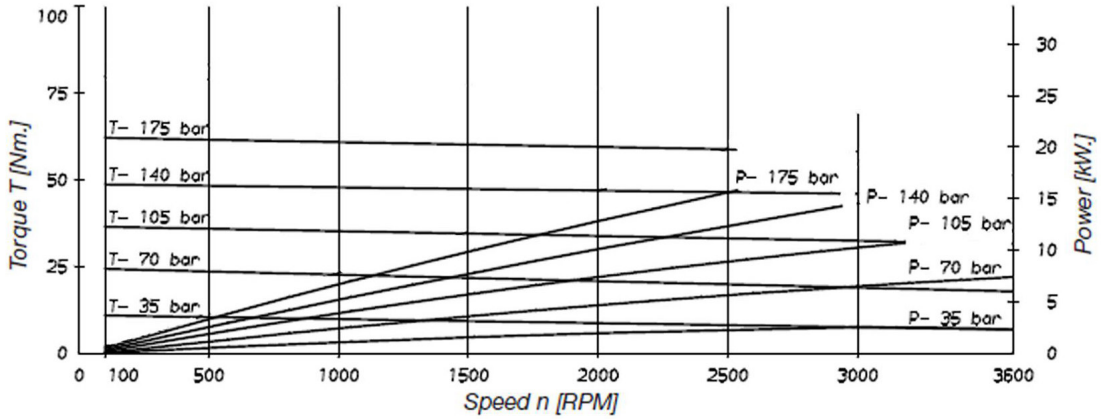


Do not apply F_r and F_a loads simultaneously

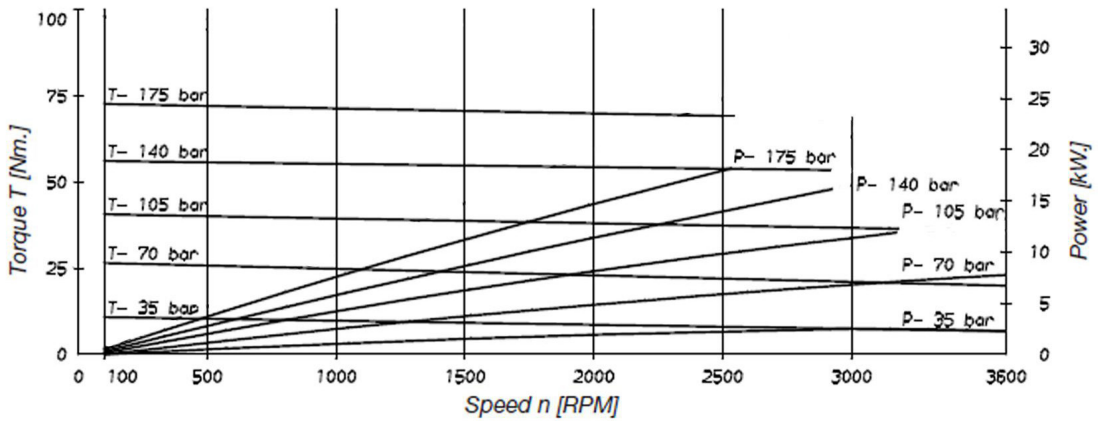
High Speed High Torque Vane Motor HM4C Series

Performance Graph Viscosity 24 cSt 45°

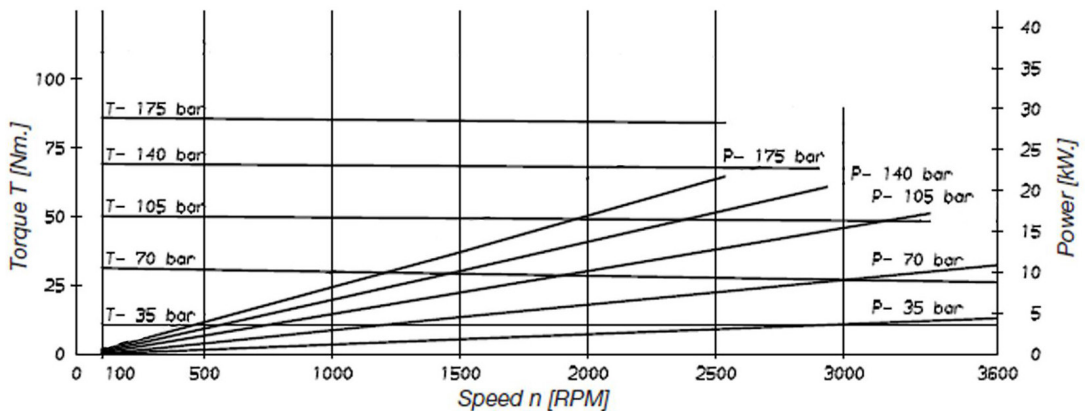
HM4C 024



HM4C 027

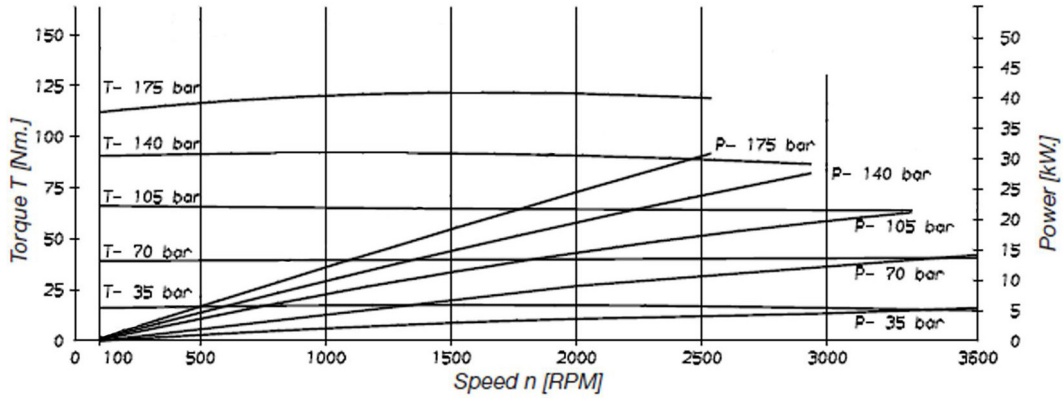


HM4C 031

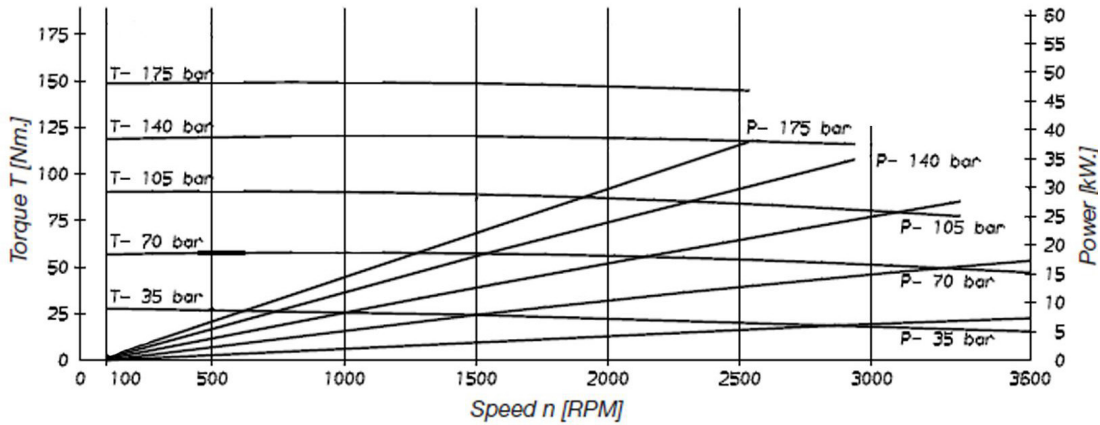


High Speed High Torque Vane Motor HM4C Series

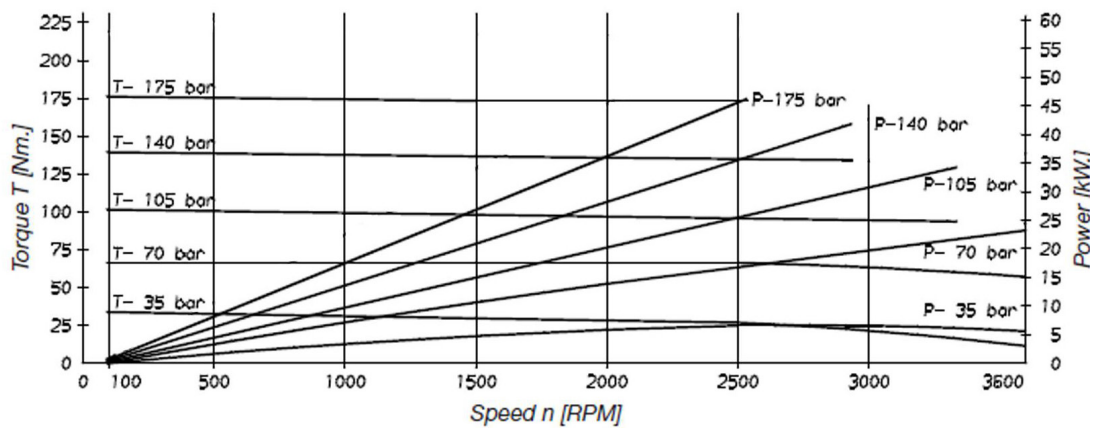
HM4C 043



HM4C 055



HM4C 067



High Speed High Torque Vane Motor HM4C Series

HM4C 075

