

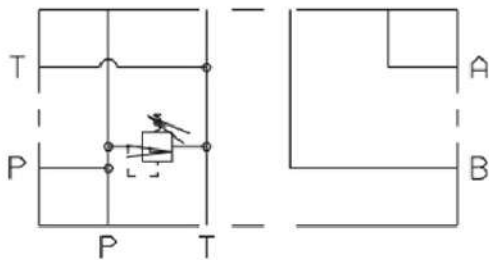
Single Station Subplate HM Series

Features and Handling

- Solenoid Valve / Cetop 3 interface
- Max Relief Pressure 240 bar
- Side / Rear Entry
- 3/8" BSP Ports



Symbols



Ordering Code

HM - G01 - 01 - A

| | | | |
|---|---|---|---|
| 1 | 2 | 3 | 4 |
|---|---|---|---|

1. Model : HM - Single Station Subplate

2. Valve size
G01 - NG06 (CETOP3)

3. Service Valve
01 - With relief valve
02 - Without relief valve

4. Pressure Range
A - 7-70 bar (100-1000 psi)
B - 35-140 bar (500-2000 psi)
C - 70-240 bar (1000-3500 psi)

Single Station Subplate HM Series

Installation Dimension mm (inch)

HM-G01-01

