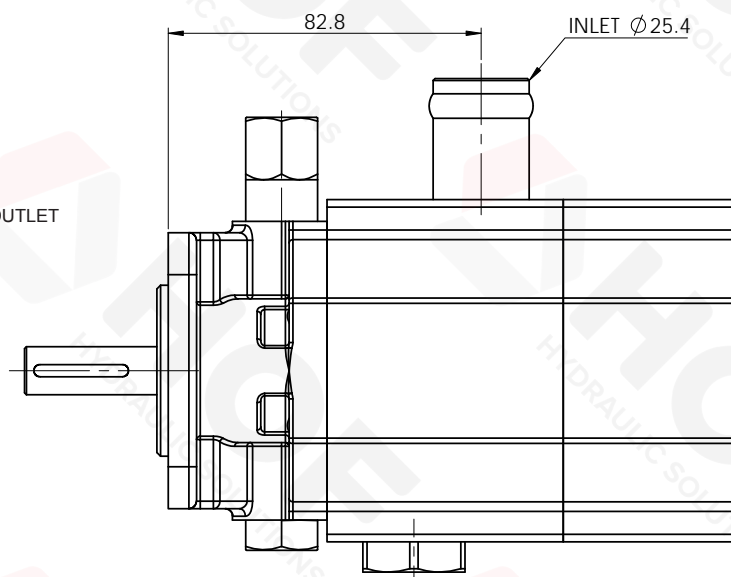
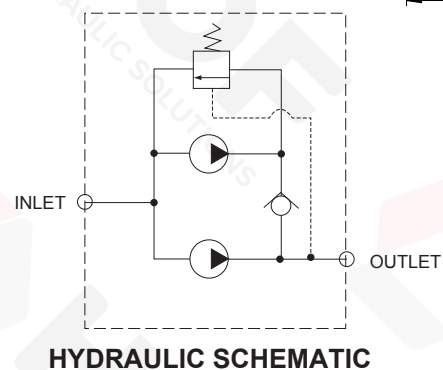
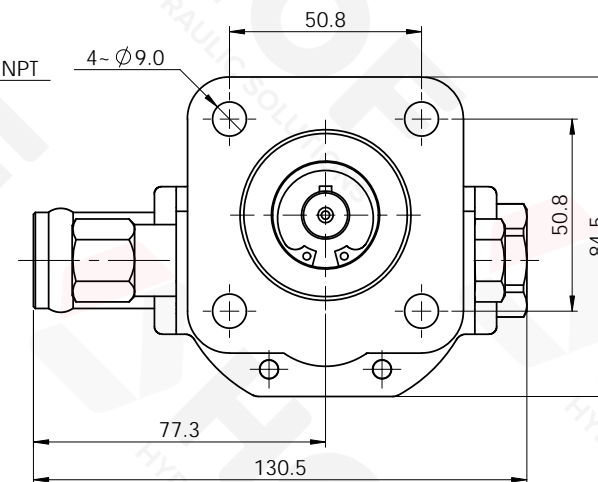
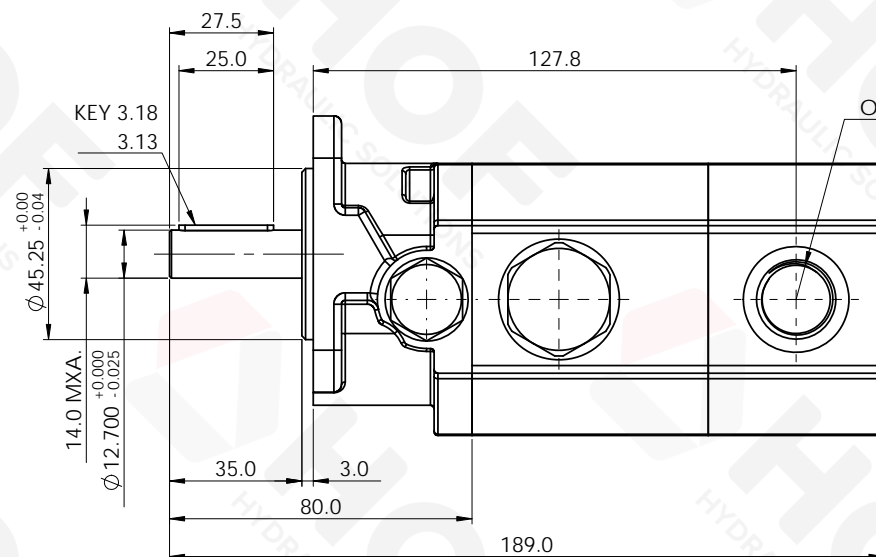


HI-LOW LOG SPLITTER GEAR PUMP

MODEL : HCBT-13.0/4.2



General Specifications

Material

Body

Gears

Shafts

Bushes

Seals

Cast Iron

Hardened Alloy Steel

Case Hardened Steel

Tin Bronze

Nitrile (NBR)

Performance

Displacement - Low flow module

4.2 cc/rev

High flow module

13.0 cc/rev

Total Displacement

17.2 cc/rev

Flow @ 3600 rpm (Low Pressure)

61.9 L/min

Maximum Pressure

210 bar

Switching sequence (Hi>Lo Flow) Pressure

30 bar Approx.

Temperature Range

10°C to 65°C

Maximum Speed

3600 rpm

Rotation

Clockwise

Weight

5 kg