

High Speed High Torque Vane Motor 35HM, 36HM Series

Features and Handling

High speed and high-pressure motors ranging from 29.0 to 193.2 cm³/r with 172 bar of maximum pressure and 10 torques rating choices. The internal inlet chambers are equally and diametrically opposed resulting in balanced in radial loads.

Thus, the motors are hydraulically balanced which reduced wear and heat from friction.

These motors provide 90% efficiency due to dual pressure plates, which produced low internal leakage. Motors are bi-rotational, simply reversed by reversing in flow direction.



Specification

Model	Torque Nm/6, 9 bar (lb in/ 100 psi)	Displacement cm ³ /r (in ³ /r)	Flow input / required @1200 r/min L/min (USgpm)	Maximum speeds & Pressure	Max. Torque Nm (lb.in.) @ Max. Pressure	Approx Weight kg (lb)
35HM & 36HM	9.0 (80)	83.6 (5.10)	100.3 (26.5)	4000 r/min @ 34 bar (500 psi)	221.5 (1960)	29.4 (64.7)
	10.7 (95)	100.3 (6.12)	120.4 (31.8)	3000 r/min @ 172 bar (2500 psi)	264.4 (2340)	
	13.0 (115)	121.9 (7.44)	146.1 (38.6)		320.9 (2840)	

High Speed High Torque Vane Motor 35HM, 36HM Series

Ordering Code

35	HM	95	-	A	-	1	C	20
1	2	3		4		5	6	7

1. Model

35 - Standard bearing
 36 - Heavy duty bearing
 SAE C 2 bolts mounting flange J744

2. Series

HM - Vane Type Motor (Externally drained)

3. Ring size-Nominal torque Rating (lb.in./100psi)

80
 95
 115

4. Mounting Flange and Port Connections

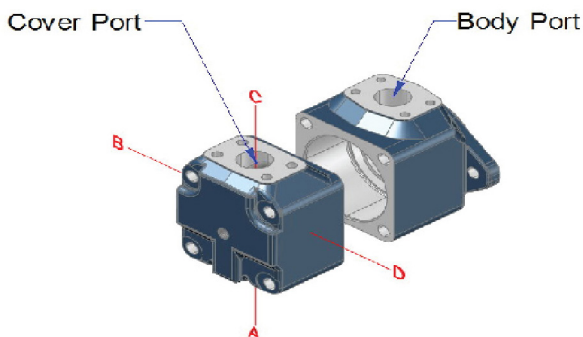
A - SAE type 2 - bolt mounting Flange and
 SAE 4 - bolt flange connections

5. Shaft

1 - Straight keyed shaft
 11 - Splined shaft

6. Cover Port positions (View from cover end)

A - Opposite body port
 B - 90° CCW from body port
 C - Inline with body port
 D - 90° CW from body port



7. Design

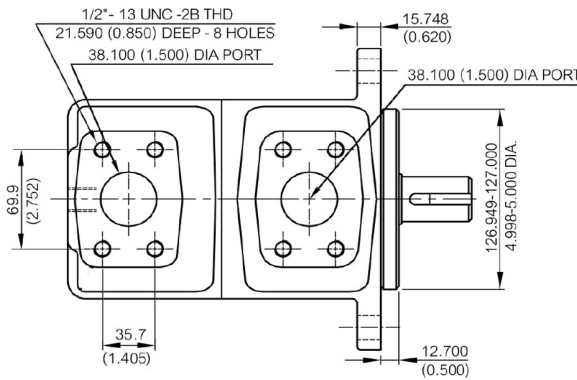
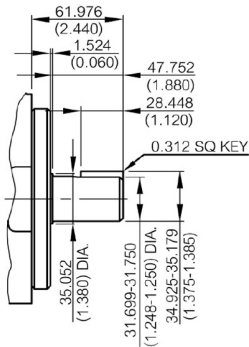
Subject to change. Installation dimensions
 remain the same for designs - 20 through -29

High Speed High Torque Vane Motor 35HM, 36HM Series

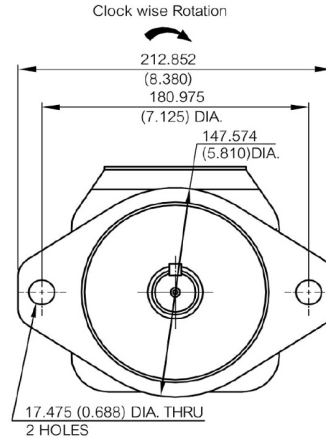
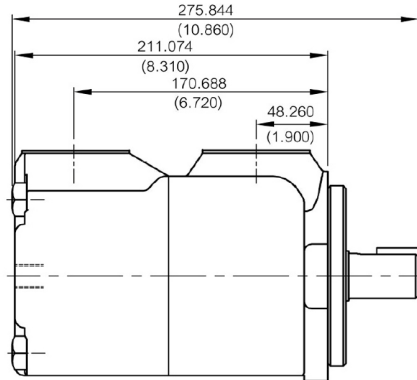
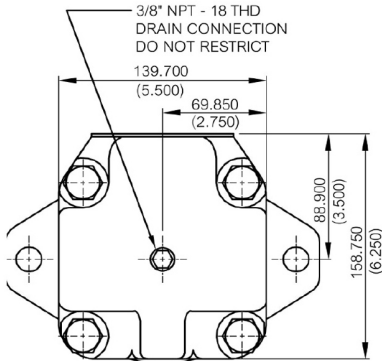
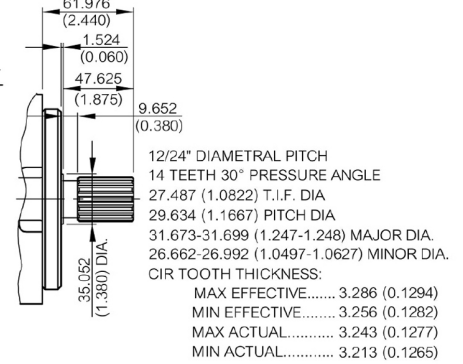
Installation Dimension mm (inch)

35HM & 36HM

35HM Series
No.1 Straight - keyed Shaft



35HM Series
No.11 SAE Involute Spline Shaft

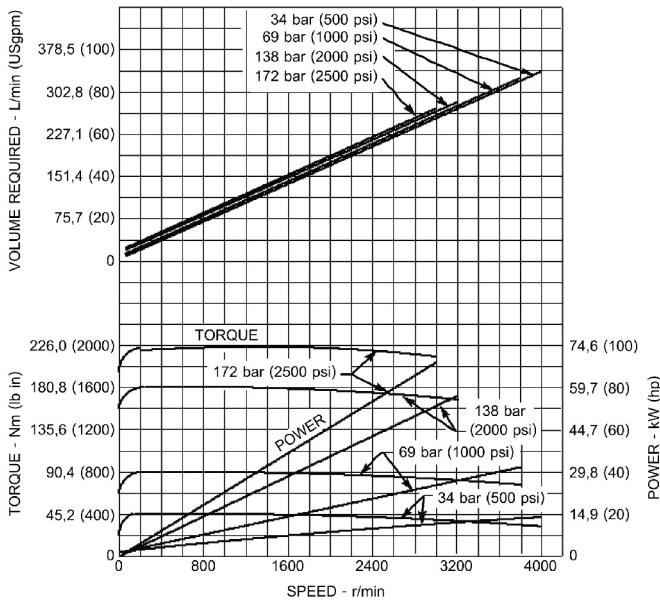


High Speed High Torque Vane Motor 35HM, 36HM Series

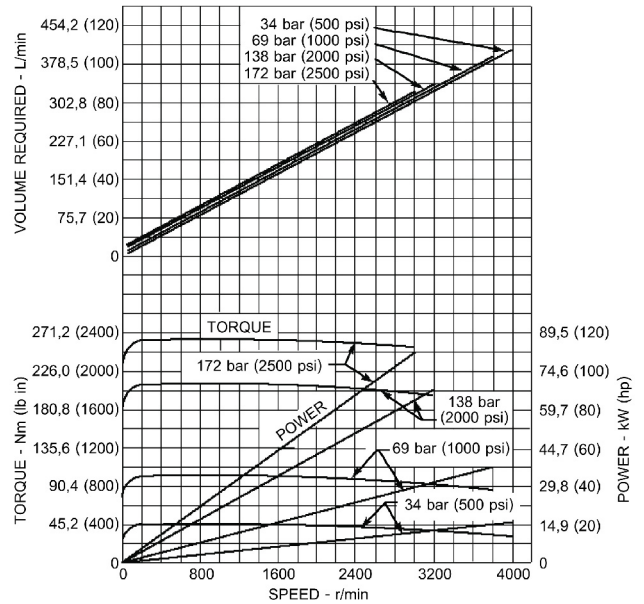
Performance Characteristics

35HM & 36HM

80 LB.IN.RING SIZE



95 LB.IN.RING SIZE



115 LB.IN.RING SIZE

