

# High Speed High Torque Vane Motor 25HM, 26HM Series

## Features and Handling

High speed and high-pressure motors ranging from 29.0 to 193.2 cm<sup>3</sup>/r with 172 bar of maximum pressure and 10 torques rating choices. The internal inlet chambers are equally and diametrically opposed resulting in balanced in radial loads.

Thus, the motors are hydraulically balanced which reduced wear and heat from friction.

These motors provide 90% efficiency due to dual pressure plates, which produced low internal leakage. Motors are bi-rotational, simply reversed by reversing in flow direction.

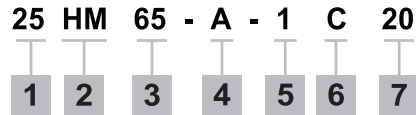


## Specification

Model	Torque Nm/6, 9 bar (lb in/ 100 psi)	Displacement cm <sup>3</sup> /r (in <sup>3</sup> /r)	Flow input / required @1200 r/min L/min (USgpm)	Maximum speeds & Pressure	Max. Torque Nm (lb.in.) @ Max. Pressure	Approx Weight kg (lb)
25HM & 26HM	3.3 (30)	29.0 (1.77)	34.8 (9.19)	4000 r/min @ 34 bar (500 psi)	80.5 (725)	18.5 (40.7)
	4.7 (42)	43.9 (2.68)	52.6 (13.9)		115.8 (1025)	
	6.2 (55)	57.7 (3.52)	69.3 (18.3)	3000 r/min @ 172 bar (2500 psi)	151.4 (1340)	
	7.3 (65)	68.7 (4.19)	82.5 (21.8)		180.8 (1600)	

# High Speed High Torque Vane Motor 25HM, 26HM Series

## Ordering Code



### 1. Model

- 25 - Standard bearing
- 26 - Heavy duty bearing
- SAE B 2 bolts mounting flange J744

### 2. Series

- HM - Vane Type Motor (Externally drained)

### 3. Ring size-Nominal torque Rating (lb.in./100psi)

- 30
- 42
- 55
- 65

### 4. Mounting Flange and Port Connections

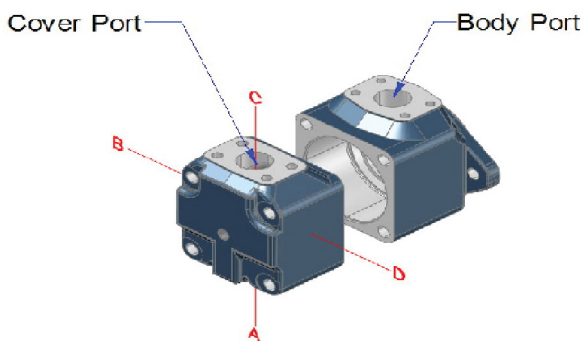
- A - SAE type 2 - bolt mounting Flange and SAE 4 - bolt flange connections

### 5. Shaft

- 1 - Straight keyed shaft
- 11 - Splined shaft

### 6. Cover Port positions (View from cover end)

- A - Opposite body port
- B - 90° CCW from body port
- C - Inline with body port
- D - 90° CW from body port



### 7. Design

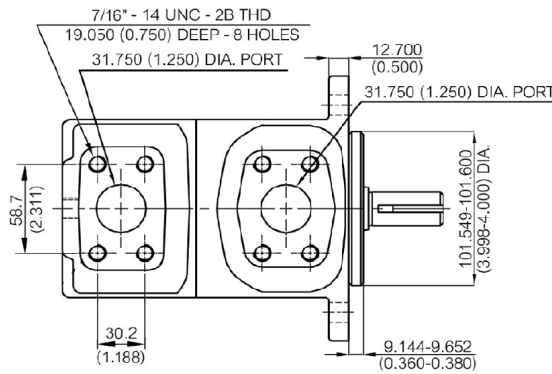
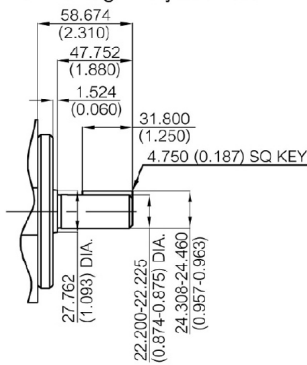
Subject to change. Installation dimensions remain the same for designs - 20 through -29

# High Speed High Torque Vane Motor 25HM, 26HM Series

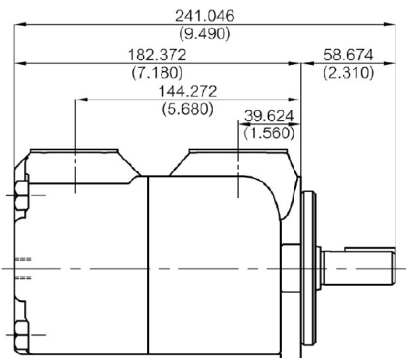
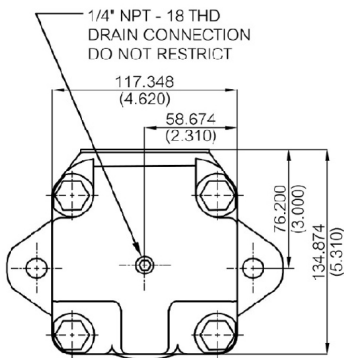
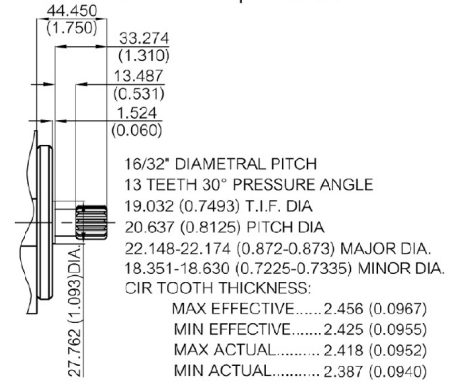
## Installation Dimension mm (inch)

### 25HM & 26HM

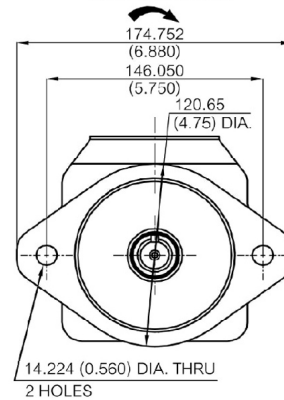
25HM Series  
No.1 Straight-keyed Shaft



25HM Series  
No.11 SAE Involute Spline Shaft



Clock wise Rotation



# High Speed High Torque Vane Motor 25HM, 26HM Series

## Performance Characteristics

### 25HM & 26HM

